

WiFiPasswordRecoveryPro User Guide

Contents

- **Requirements**
- **Installation**
- **WiFiPasswordRecoveryPro GUI Version**
- **Wi-Fi Security Analysis**
- **Wi-Fi Password Removal Feature**
- **Wi-Fi Password Report Generation**
- **Command-line Version**
- **Automation of Wi-Fi Password Recovery**

Requirements

WiFiPasswordRecoveryPro works on both 32-bit & 64-bit platforms starting from Windows Vista to **Windows 10**.

Here are more details,

Installation Size: 15 MB

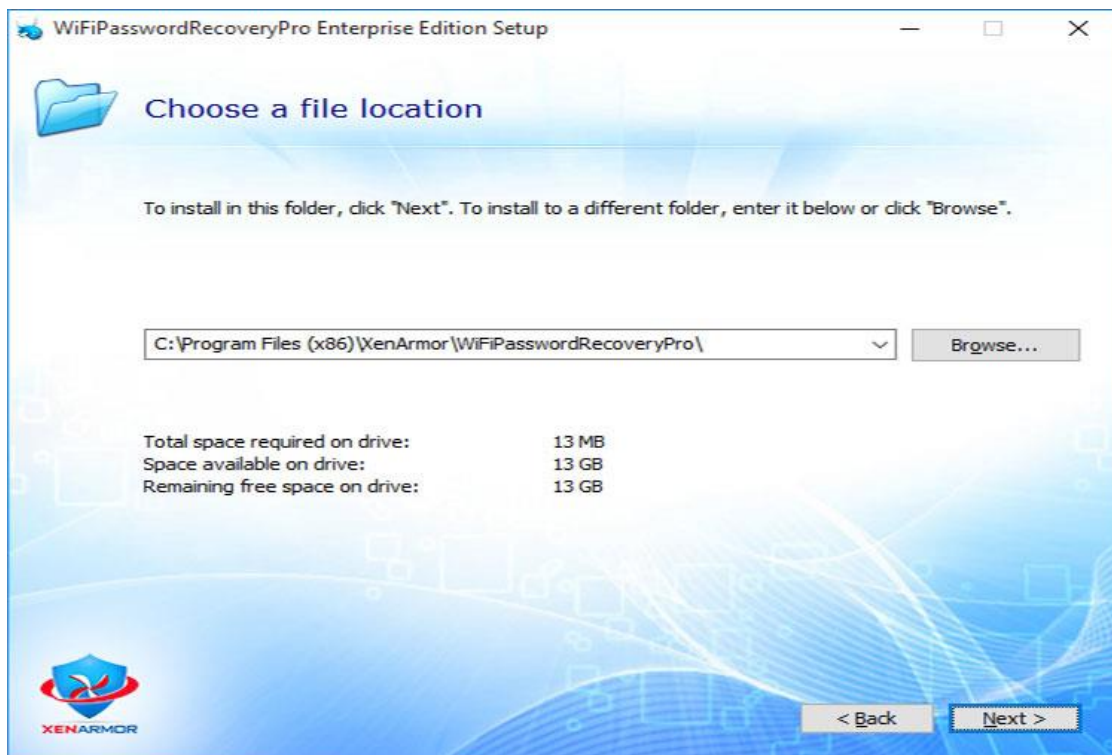
RAM: 4 GB+ Recommended

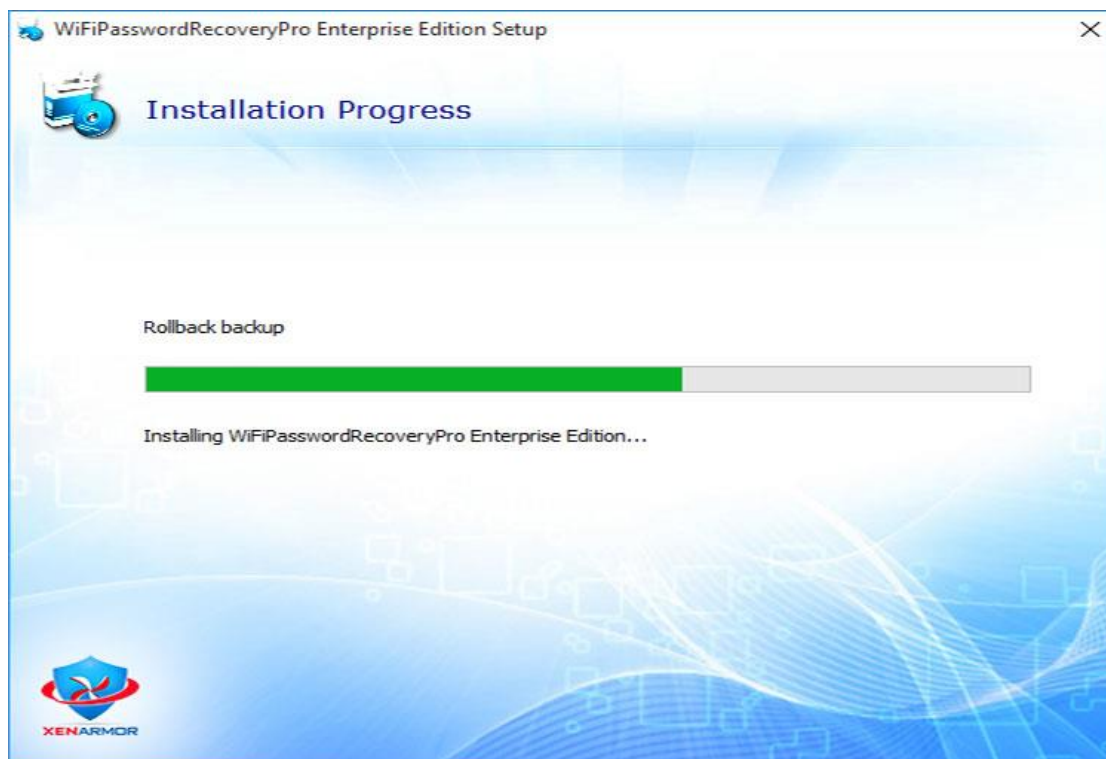
Operating System: Windows Vista, Windows 2008/2012/2016, Windows 7/8/10.

Installation of WiFiPasswordRecoveryPro

WiFiPasswordRecoveryPro comes with standard windows installer which allows seamless installation & un-installation.

Launch the setup file and follow on-screen instructions to complete the installation as shown below,





You can un-install it from the **Control Panel** or click on **Uninstaller** from Installed location of WiFiPasswordRecoveryPro

WiFiPasswordRecoveryPro GUI Version

WiFiPasswordRecoveryPro is the Enterprise Software to help you Recover as well as Remove all the Wireless Passwords from Your Windows System with just a click of button.

It **automatically** detects all the configured Wi-Fi profiles and decrypts the passwords instantly. Then for each recovered Wi-Fi profile, it displays complete details including Wi-Fi SSID Name, Security Settings (WEP, WPA, WPA2), Type, Wi-Fi Password etc.

WiFiPasswordRecoveryPro is very easy to use. After installation, just launch it and you will see all the recovered Wi-Fi passwords with brief summary as shown below,



You can easily sort the displayed list based on Wi-Fi Name, Type, Password, Status etc by simply clicking on corresponding header in the List.

Right Click Menu Options

Right click context menu helps you to quickly & easily copy various fields (such as Wi-Fi Name, Type, Password etc) as well as Remove the selected Wi-Fi profile from the system as shown below.



Wi-Fi Security Analysis

Enterprise Edition of WiFiPasswordRecoveryPro also performs detailed security analysis of each recovered Wi-Fi profile and classifies them as Dangerous, Vulnerable, Warning, Good based on their password security configuration. For each security level it displays the reason along with recommended action. Also each of these Security issues are represented in different color codes to help you identify issues quickly.

Here is the screenshot showing various security levels with different colors,



Here are more details on each security levels and respective color codes,

- **Dangerous:** This Wi-Fi is Unsecured, anyone can connect to it. Enable Wi-Fi Security - RED Color
- **Vulnerable:** WEP key can be cracked easily. Recommended to use WPA2 - Brown Color
- **Warning:** Short password can be cracked easily. Use stronger password - Yellow Color
- **Good:** This is more Secure Wi-Fi configuration - Blue Text Color

Same color codes are used in both GUI list as well as in HTML report.

Wi-Fi Password Removal Feature

WiFiPasswordRecoveryPro can help you to easily remove one or more selected Wi-Fi password profiles with click of button as shown below,



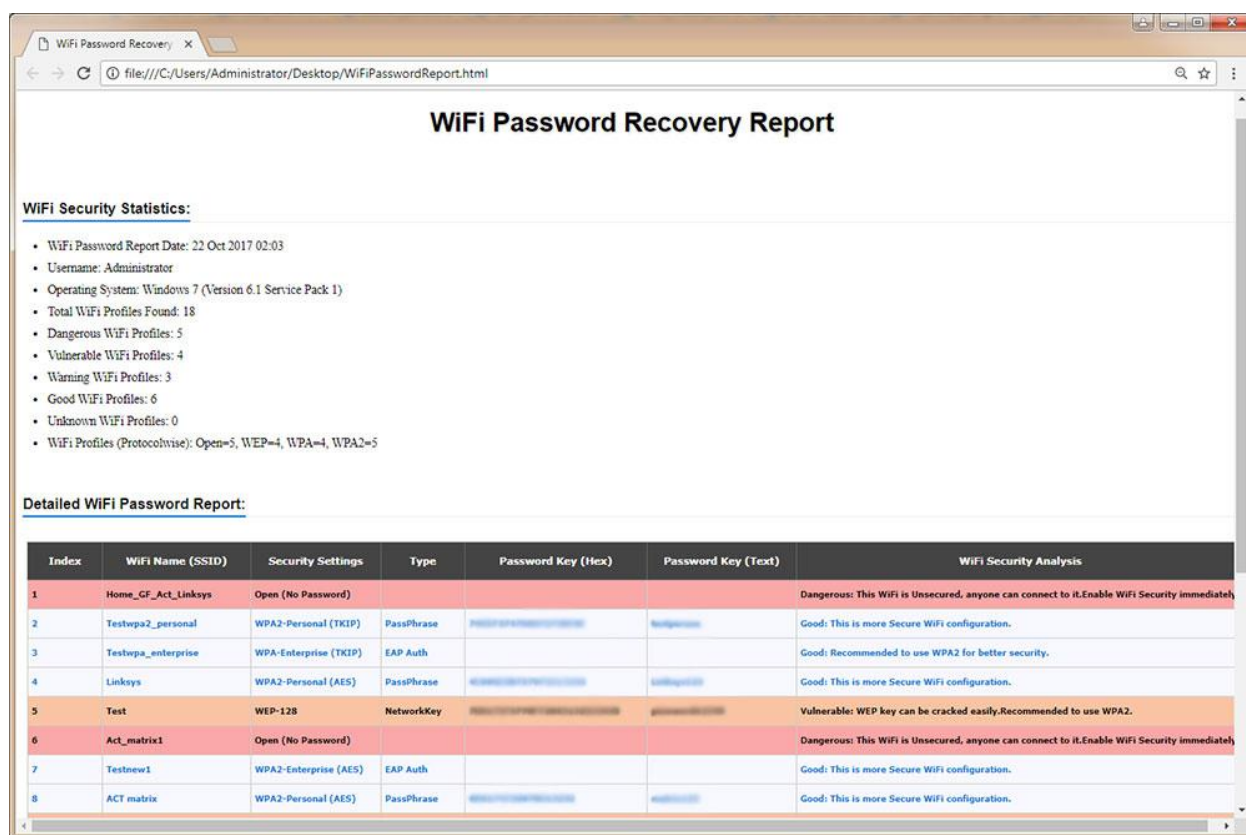
Simply select one or more Wi-Fi profile from the list and click on **Remove Button** to delete it from your system. You can also **right click** on selected Wi-Fi profile and remove it.

This feature is available only in Enterprise Edition.

Wi-Fi Password Report Generation

WiFiPasswordRecoveryPro helps you to generate detailed report in both **HTML & CSV format**. Simply click on Report button and then select the Type of Report (HTML or CSV) from the File Save Dialog as shown below.

Here is the sample of HTML report along with security statistics,



WiFi Password Recovery Report

WiFi Security Statistics:

- WiFi Password Report Date: 22 Oct 2017 02:03
- Username: Administrator
- Operating System: Windows 7 (Version 6.1 Service Pack 1)
- Total WiFi Profiles Found: 18
- Dangerous WiFi Profiles: 5
- Vulnerable WiFi Profiles: 4
- Warning WiFi Profiles: 3
- Good WiFi Profiles: 6
- Unknown WiFi Profiles: 0
- WiFi Profiles (Protocolwise): Open=5, WEP=4, WPA=4, WPA2=5

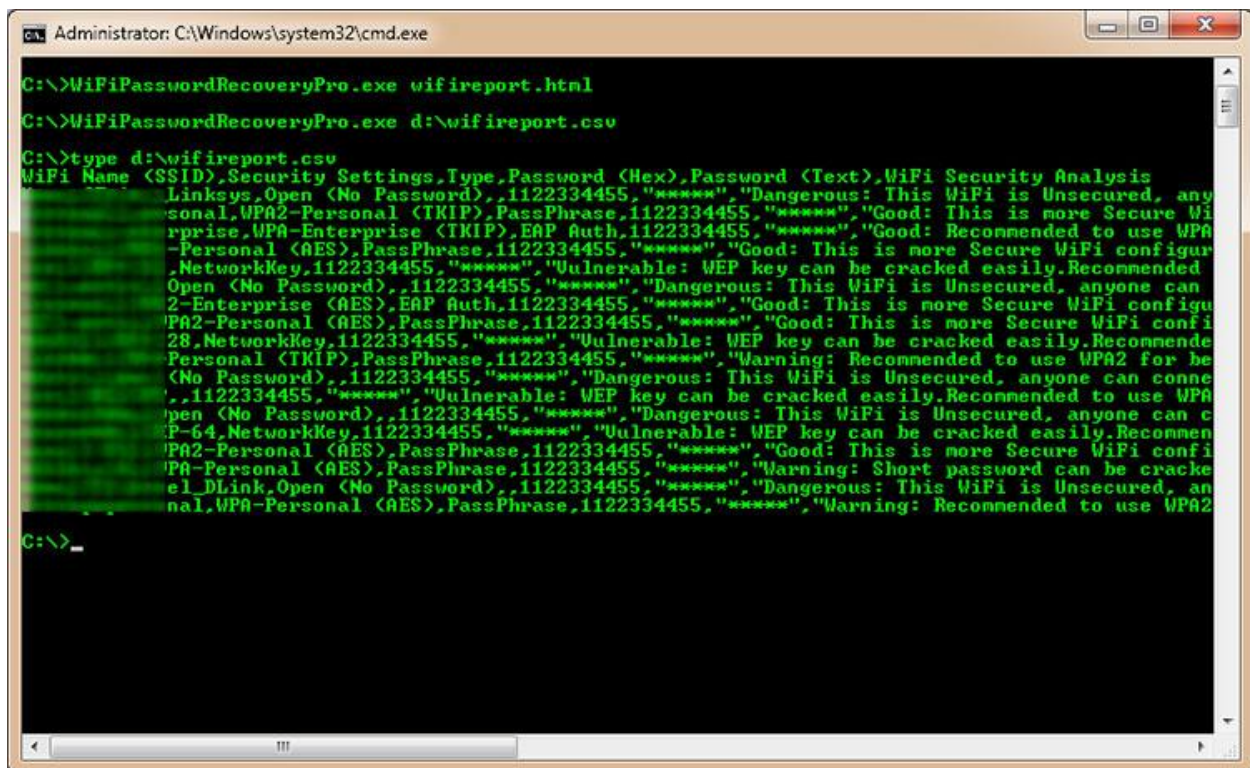
Detailed WiFi Password Report:

Index	WiFi Name (SSID)	Security Settings	Type	Password Key (Hex)	Password Key (Text)	WiFi Security Analysis
1	Home_GF_Act_Linksys	Open (No Password)				Dangerous: This WiFi is Unsecured, anyone can connect to it.Enable WiFi Security immediately
2	Testwpa2_personal	WPA2-Personal (TKIP)	PassPhrase	78504747474747474747474747474747	78504747474747474747474747474747	Good: This is more Secure WiFi configuration.
3	Testwpa_enterprise	WPA-Enterprise (TKIP)	EAP Auth			Good: Recommended to use WPA2 for better security.
4	Linksys	WPA2-Personal (AES)	PassPhrase	40404040404040404040404040404040	40404040404040404040404040404040	Good: This is more Secure WiFi configuration.
5	Test	WEP-128	NetworkKey	78504747474747474747474747474747	78504747474747474747474747474747	Vulnerable: WEP key can be cracked easily.Recommended to use WPA2.
6	Act_matrix1	Open (No Password)				Dangerous: This WiFi is Unsecured, anyone can connect to it.Enable WiFi Security immediately
7	Testnew1	WPA2-Enterprise (AES)	EAP Auth			Good: This is more Secure WiFi configuration.
8	ACT matrix	WPA2-Personal (AES)	PassPhrase	40404040404040404040404040404040	40404040404040404040404040404040	Good: This is more Secure WiFi configuration.

WiFiPasswordRecoveryPro Command-line Version

WiFiPasswordRecoveryPro supports both GUI & command-line in the single executable file. Command-line version helps you to fully Automate Wi-Fi password recovery process. [You can also easily integrate it into your scripts or programs as part of advanced operations.](#)

Here is the screenshot of Command-line version (passwords masked for security reasons)



```
Administrator: C:\Windows\system32\cmd.exe
C:\>WiFiPasswordRecoveryPro.exe wifireport.html
C:\>WiFiPasswordRecoveryPro.exe d:\wifireport.csv
C:\>type d:\wifireport.csv
WiFi Name <SSID>,Security Settings,Type,Password (Hex),Password (Text),WiFi Security Analysis
Linksys,Open (No Password),,1122334455,"*****","Dangerous: This WiFi is Unsecured, any
sonal,WPA2-Personal (TKIP),PassPhrase,1122334455,"*****","Good: This is more Secure Wi
prise,WPA-Enterprise (TKIP),EAP Auth,1122334455,"*****","Good: Recommended to use WPA
-Personal (AES),PassPhrase,1122334455,"*****","Good: This is more Secure WiFi configur
,NetworkKey,1122334455,"*****","Uulnerable: WEP key can be cracked easily.Recommended
Open (No Password),,1122334455,"*****","Dangerous: This WiFi is Unsecured, anyone can
2-Enterprise (AES),EAP Auth,1122334455,"*****","Good: This is more Secure WiFi configu
PA2-Personal (AES),PassPhrase,1122334455,"*****","Good: This is more Secure WiFi confi
28,NetworkKey,1122334455,"*****","Uulnerable: WEP key can be cracked easily.Recommende
Personal (TKIP),PassPhrase,1122334455,"*****","Warning: Recommended to use WPA2 for be
(No Password),,1122334455,"*****","Dangerous: This WiFi is Unsecured, anyone can conne
,,1122334455,"*****","Uulnerable: WEP key can be cracked easily.Recommended to use WPA
open (No Password),,1122334455,"*****","Dangerous: This WiFi is Unsecured, anyone can c
P-64,NetworkKey,1122334455,"*****","Uulnerable: WEP key can be cracked easily.Recommen
PA2-Personal (AES),PassPhrase,1122334455,"*****","Good: This is more Secure WiFi confi
PA-Personal (AES),PassPhrase,1122334455,"*****","Warning: Short password can be cracke
el_DLink,Open (No Password),,1122334455,"*****","Dangerous: This WiFi is Unsecured, an
anal,WPA-Personal (AES),PassPhrase,1122334455,"*****","Warning: Recommended to use WPA2
C:\>_
```

Here are various command-line options & examples

`WiFiPasswordRecoveryPro.exe [report.html | report.csv]`

```
//Recover & Save the Wi-Fi Password Report in HTML format (default)
WiFiPasswordRecoveryPro.exe report.html
```

```
//Recover & Save the Wi-Fi Password Report to CSV file locally
WiFiPasswordRecoveryPro.exe report.csv
```

```
//Save the Wi-Fi Password Report to selected folder
WiFiPasswordRecoveryPro.exe "c:\my reports\report.html"
```

www.XenArmor.com

By default it will generate report in HTML format. You can specify CSV extension to Output File to generate report in CSV format.

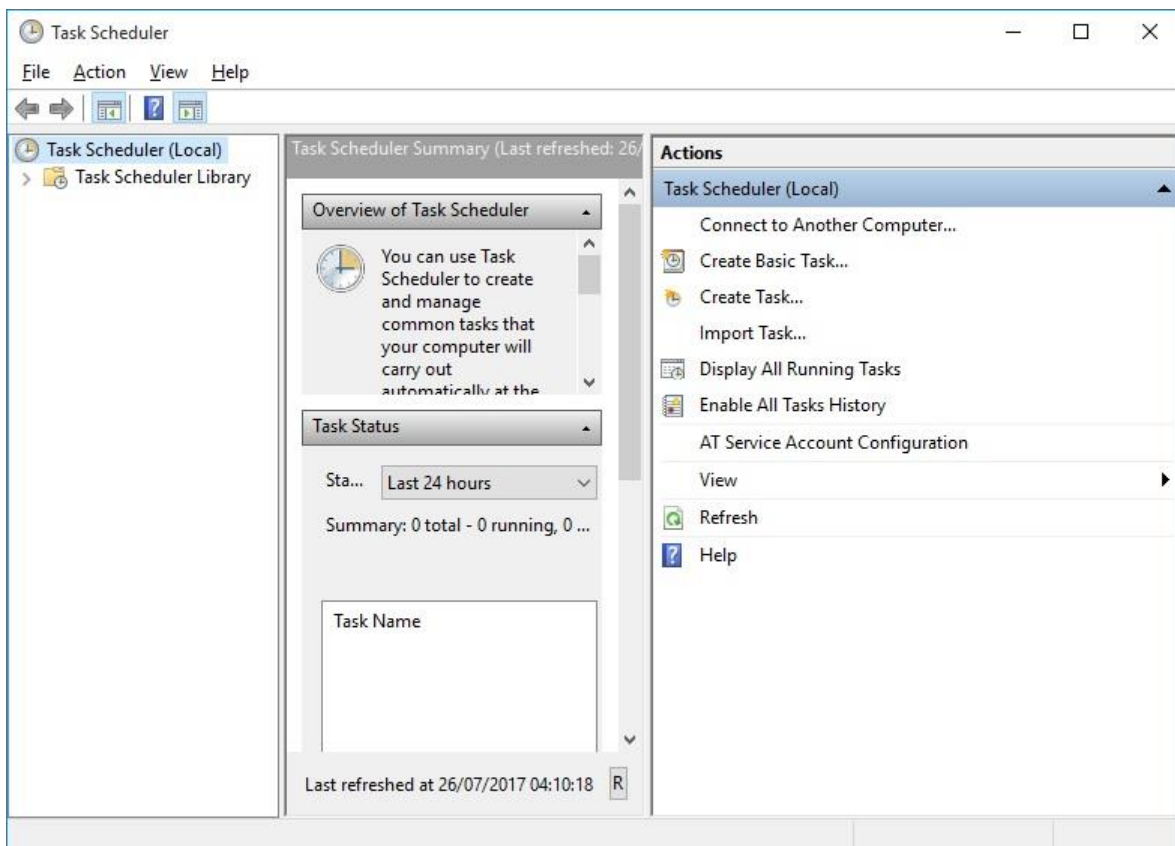
Note that Command-line version is available only in Enterprise Edition.

Automation of Wi-Fi Password Recovery

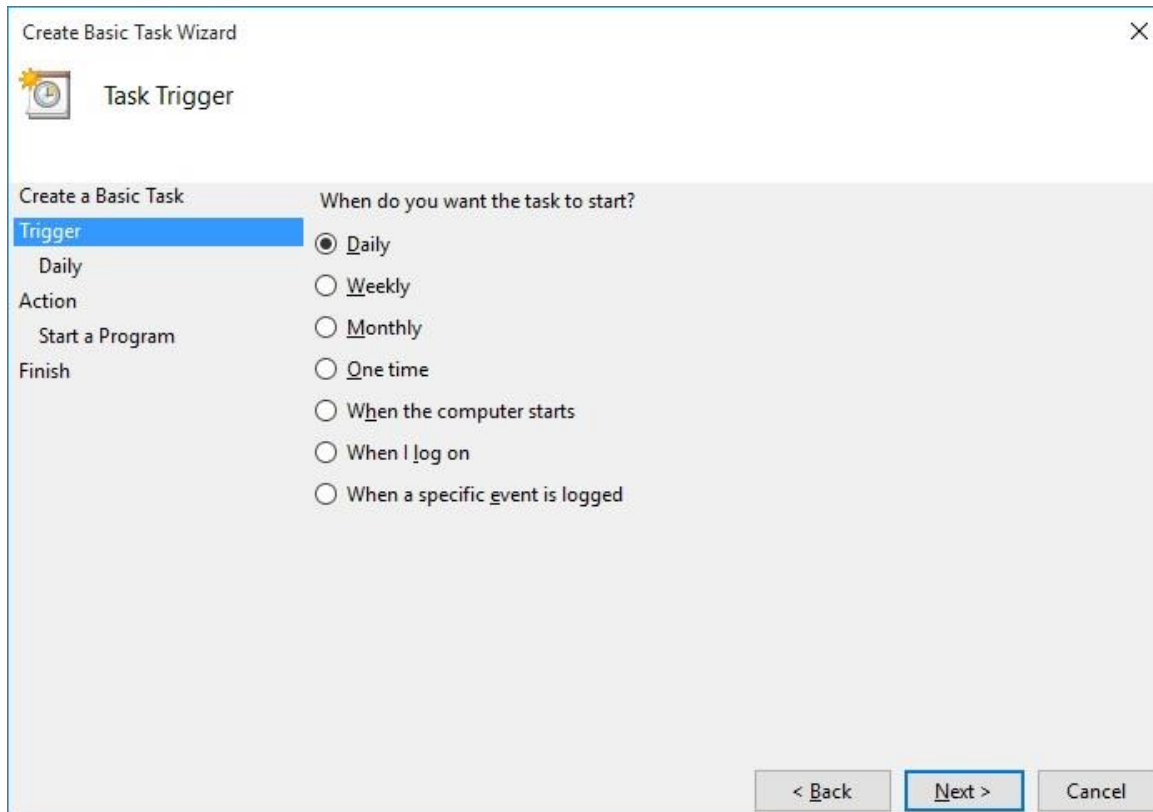
WiFiPasswordRecoveryPro Command-line version can help you to completely automate your Wi-Fi password recovery operations daily or periodically. It can generate detailed report in CSV or HTML format which can be used for future auditing.

Here are simple steps to automate Wi-Fi Password Recovery using Windows Scheduler.

1) Launch Windows Task Scheduler from Administrative Tools in Control Panel. Next click on "Create Basic Task" on right side panel as shown below,



2) On the Basic Task page, enter name as 'WiFi Password Recovery'. On next page select 'Daily or Weekly or Monthly' with appropriate Time settings as per your need.

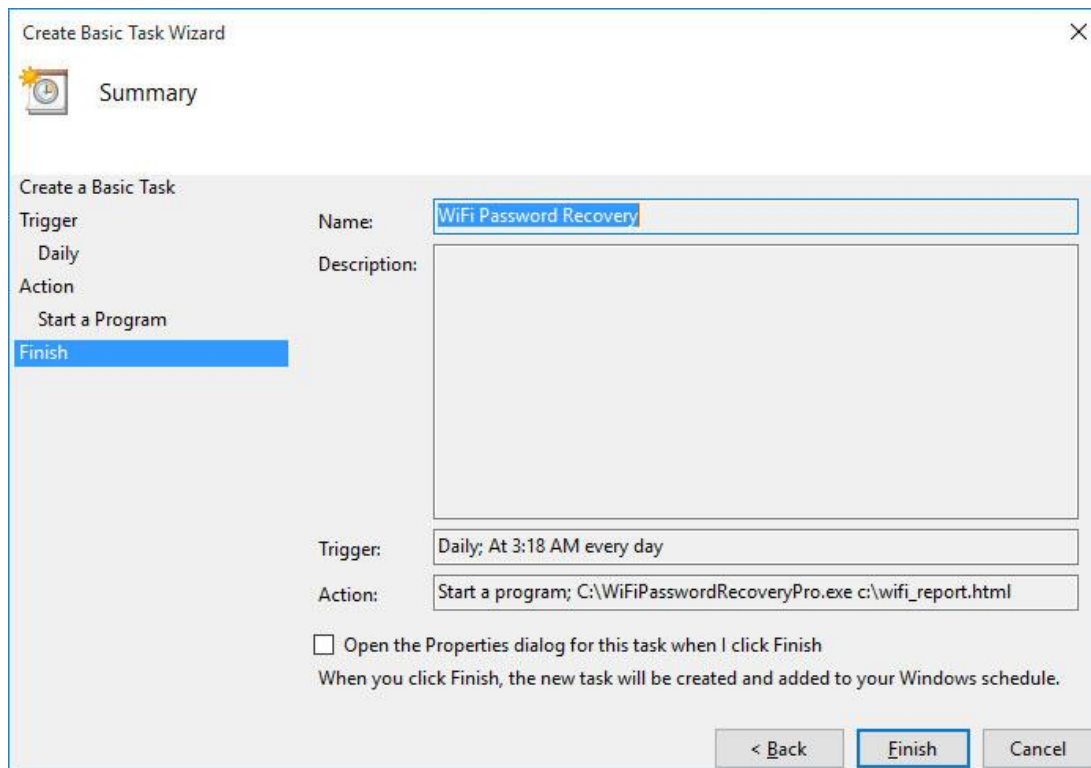


3) Next on the 'Action' Page, click on Start Program and then enter command & arguments as shown below,

For more command-line options refer to WiFiPasswordRecoveryPro Command-line Version section.



4) Finally click on Finish button to schedule the automatic Wi-Fi Password Recovery operation.



Need Help?

Have any more queries or need any technical clarification? Just write to us at **support@xenarmor.com** and you will have response within 24 to 48 hours.

For more details visit home page of [WiFi Password Recovery Pro](#)