

Wireless Information And Entertainment Server

Version 2.0

User's Guide

March 2011

© Babu Software, All rights reserved.

This document is for use with the WIAES. Reproduction, transfer, distribution or storage of part or all of the contents in this document in any form without the prior written permission of Babu Software is prohibited.

1.0 Introduction

This document describes the WIAES.

2.0 Getting Started

This document describes the WIAES:

WIAES intended for mobile based sms text service to mobile client (mobile phone users).

2.1 Overview

WIAES is Remote Client for Netshell it uses to upload message to remote server NetShell.

2.2 Features

Group Messaging
Backend database (MS Access)
User Friendly Configuration
Easy Update User/Group Information
Fetch reports from server

2.3 About the Package Components

Here is a brief description of the components contained in the packages listed above:

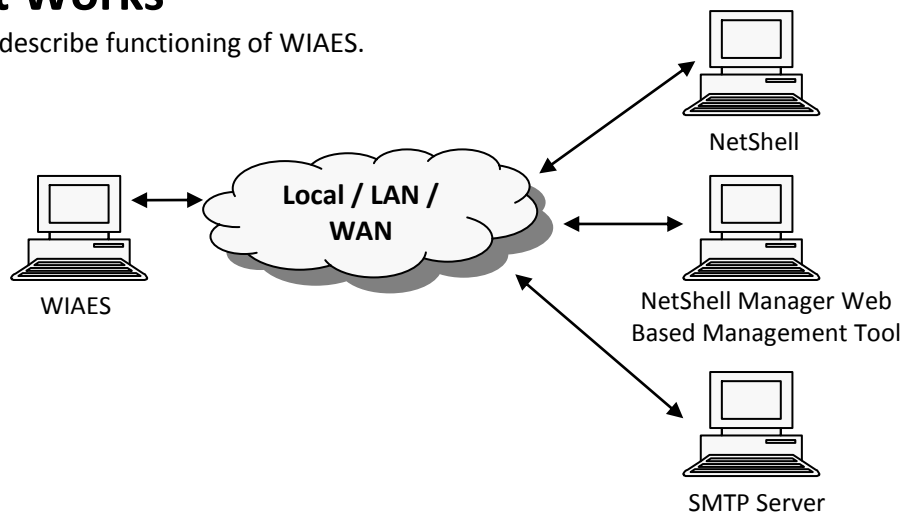
- Remote Client for NetShell

3.0 Software Requirements

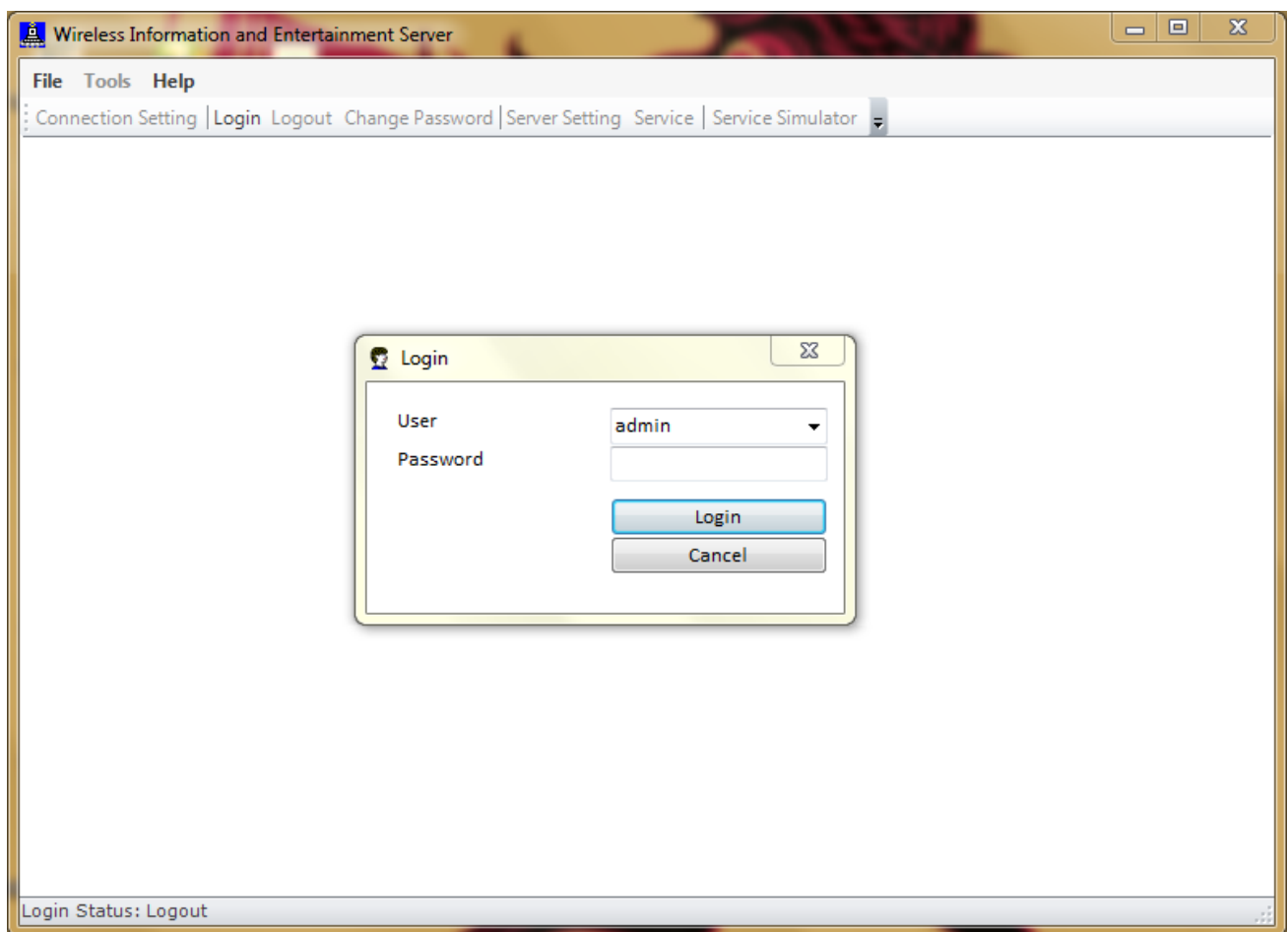
- Microsoft® Windows® 2000 SP 2 or Microsoft® Windows NT SP4 / 98 / Me / XP / 2002 / 2003 / Vista / 2008 / Windows 7.
- Microsoft Framework 3.5 SP1, freely available from the Microsoft web site at www.microsoft.com. Microsoft Framework 3.5 SP1 is highly recommended.
- Microsoft Internet Explore 6.0
- Service Requirements Netshell (Local / Remote)

4.0 How It Works

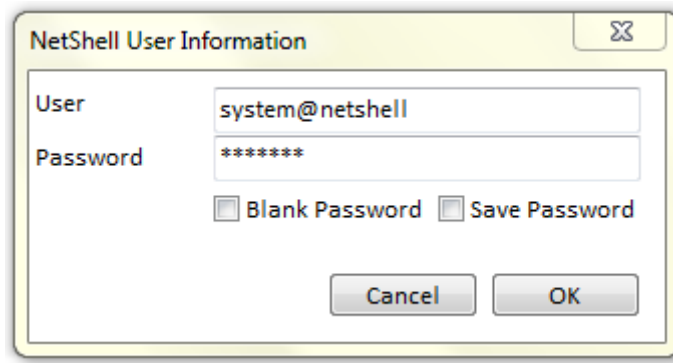
Diagram below describe functioning of WIAES.



5.0 WIAES Application and Connectivity



Screen 1: WIAES



Screen 2: User Information

Connectivity information set by user information interface default user name set *system@netshell* and password *manager* if you are not administrator then you require NetShell service account for this you contact to your NetShell administrator.

6.0 FAQ

Q. Please provide default setting information?

A. default setting of WIAES given blow

User/Password	system@netshell/manager (Find out your user account id /pass)
WIAES default port	8020 TCP
WIAES Configuration File	client.exe.config
Location of configuration file	C:\Program Files\Babu Software\WIAES\
Default WIAES Administrator User/Password	admin/admin

Q. Can Change of WIAES port is possible?

A. yes change of port is possible.

Q. How to change WIAES port?

A. Find out Netshell service host and port then Open Configuration file "client.exe.config" in notepad. For Example I found that my NetShell service is running 9920 port host localhost so change port is required from 8020 to 9920

Change value from

```
<client url="http://localhost:8020/RemotingSMS">
<wellknown type="service.netshell.ServiceNeXT, service.netshell"
url="http://localhost:8020/RemotingSMS/ServiceNeXT.soap" />
</client>
```

to

```
<client url="http://localhost:9920/RemotingSMS">
<wellknown type="service.netshell.ServiceNeXT, service.netshell"
url="http://localhost:9920/RemotingSMS/ServiceNeXT.soap" />
</client>
```

Q. Remote management of WIAES is possible?

A. NO remote management is possible.

Q. Always got message invalid mobile number, is any validation set for mobile number?

A. YES, mobile number validation set for 10 or 10 + digit numbers (e.g. +919415917612). if you require deferent mobile number validation contact to support team.

Q. Whenever I send command always got message ***the underline connection was close: unable to connect remote server?***

A. this is due to service not available or invalid configuration. Find out correct configuration, service status from your NetShell Administrator.

7.0 Keywords Specifications for WIAES

Service	Keyword	Use
Menu	M /m	Get Menu of all Services provide by the server.
News	New / new / NEWS / news	Get news update
Cricket	CRI / cri / CRICKET / cricket	Get cricket update
Jokes	JOK / jok / JOKE / joke	Gets jokes
Astrology	AST / ast / ASTRO / astro / AST <sun-sign> / ast <sun-sign> / ASTRO <sun-sign> / astro <sun-sign>	Get Daily Horoscope
Dating	DAT / dat / DATING / dating	initiate dating service
	Login	Quick login to service
	Login <user> <age> <sex> <location>	User Registration to service
	Find	Search All User Who is logon.
	Find <user>	Brows user Profile
	Find <age-range> <sex>	Search of user by criteria Age range and sex
	Find <age-rang> <sex><location>	Search For user
	Send <user><message>	Send message to user
	Logout	Logout from service

8.0 For More Information

For more information about configuring and using the components in the packages, contact

Manoj Yadav

Babu Software

Phone Number: (+91) 9415917612

Or mail to support@bstpl.co.in

Website <http://www.bstpl.co.in>