

RUN CONFIGURATION MANAGER

1. Run configuration manager (*VaxTeleConfigSIP.exe*).
2. Enter the IP of the computer on which SIP Server application OR service is running.
3. Enter login and password.
4. Click connect button.

Please see configuration manual (*ConfigManual.pdf*) for further details.

RUN SIP SERVER AS WINDOWS APPLICATION

1. Register VaxTele SIP SDK COM component (*VaxTeleServerSIP.dll*) by using regsvr32 command on command prompt.
2. Run "VaxTeleAppSIP.exe".
3. Click start button.

RUN SIP SERVER AS WINDOWS SERVICE

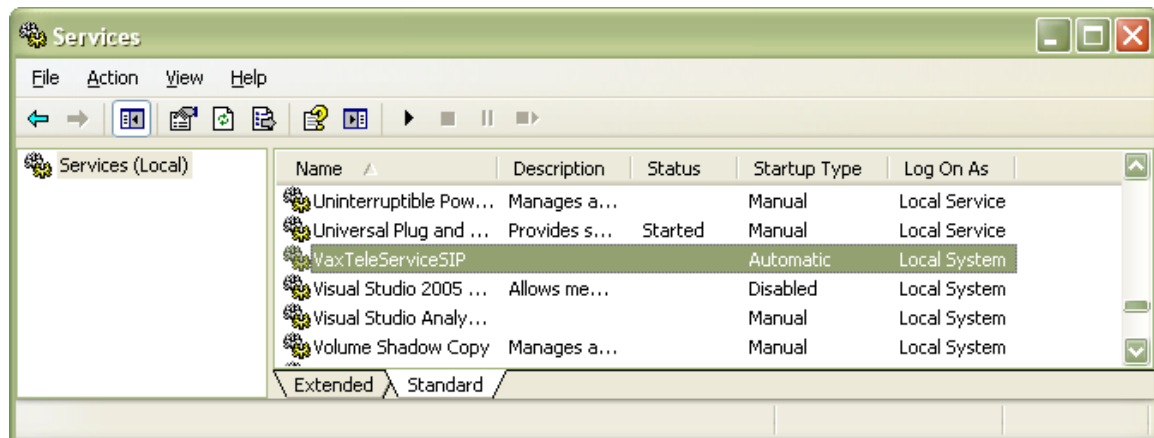
1. Register VaxTele SIP SDK COM component (*VaxTeleServerSIP.dll*) by using regsvr32 command on command prompt.
2. To install service, run *VaxTeleServiceSIP.exe* on command prompt.

e-g:

To install a service:
`VaxTeleServiceSIP.exe -install`

To remove a service:
`VaxTeleServiceSIP.exe -remove`

3. Execute windows service manager from control panel and find (*VaxTeleServiceSIP*), right click and run the service. Otherwise restart the computer.



Please see MSDN and online MSDN help for further details about installing windows services.