

Orbatel PC-TVS 2050 Satellite Player



User Guide

Table of Contents

I. Introduction.....	3
II. System Requirements	3
III. Installation	4
IV. Configuration and Usage	7
1. Browsing Channels	7
2. Playing a Channel	7
3. Adding Channels	9
4. Recently Viewed & Favorite Channels	11
5. Shortcuts	13
V. Contact Information.....	15

I. Introduction

Thank you for your purchase of the Orbatel PC-TVS 2050 Satellite Player. This User Guide provides you with information regarding system requirements, installation, configuration, and usage of your player. For Technical Support, or to provide feedback, please contact us via email: support@orbatel.com

II. System Requirements

Your Orbatel PC-TVS 2050 Satellite Player requires the following to function effectively:

Operating System:

- Microsoft Windows ® 2000
- Microsoft Windows ® XP Professional / Home
- Microsoft Windows ® Vista

Disk Space:

- 3 MB of free space for the installation folder
- 7 MB of free space for the application

Memory:

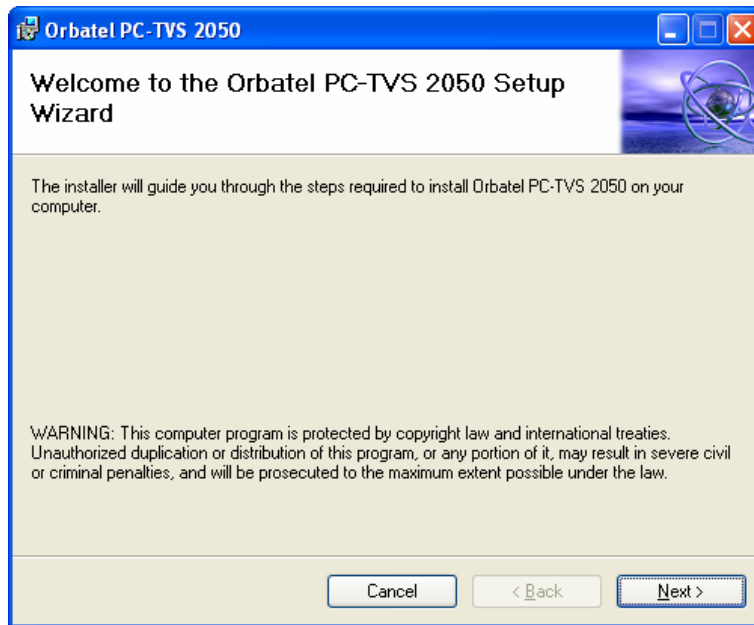
- At least 256 MB of RAM is recommended for the Player to function appropriately

In addition to the above, the Microsoft .NET 2.0 platform is a prerequisite for the player. If you do not have .NET 2.0 on your system prior to installation, the installer will prompt you for it.

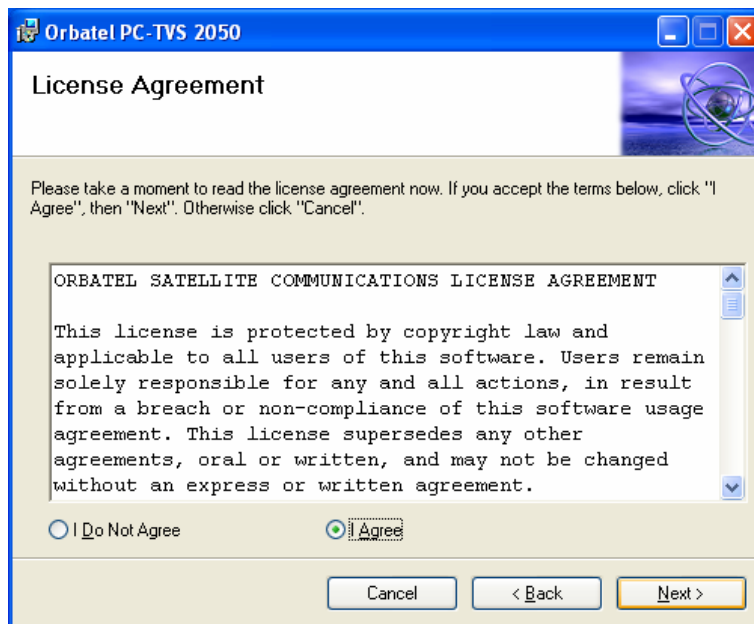
III. Installation

Installation of the Orbatel PC-TVS 2050 Satellite Player can be performed using the following steps:

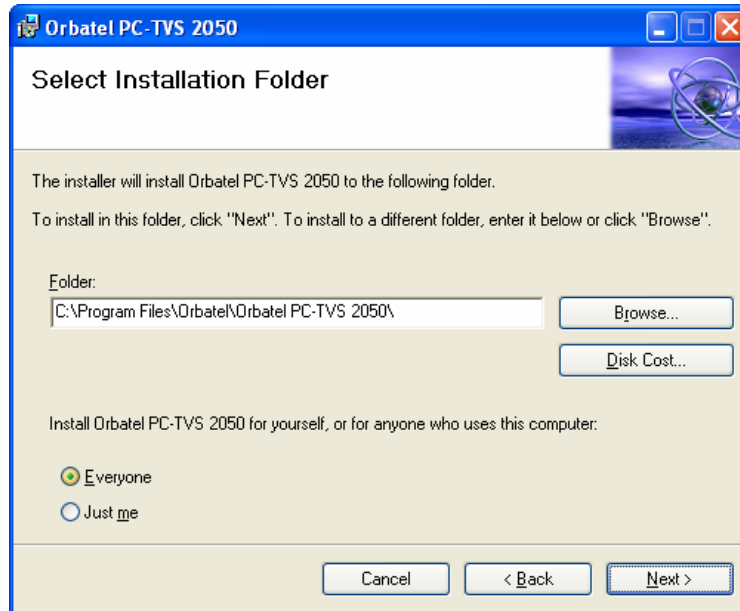
1. Double-click on the **Install.exe** file to launch the installer.
2. Click **Next** to begin the installation process:



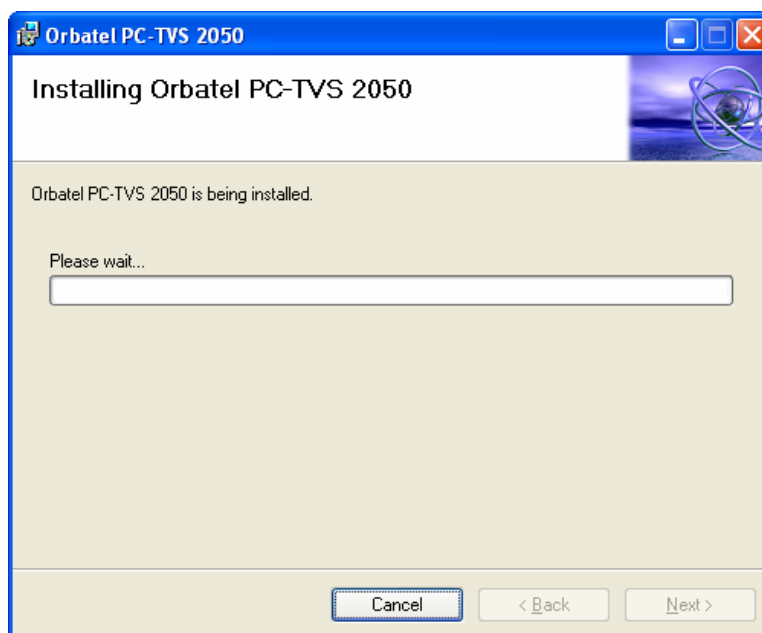
3. Review the User Agreement. If you agree to it, check the **Agree** radio button and click **Next**:



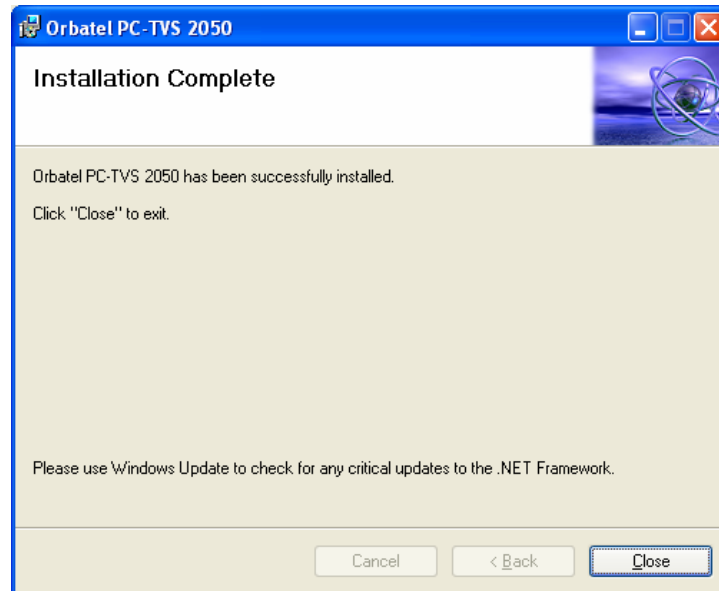
4. On the following screen, select the appropriate installation directory for your player. You can additionally specify whether the application should be installed for all users, or only the currently logged in user. Click **Next** to proceed:



5. On the Confirmation Screen, click **Next** to begin the installation process. This begins the installation of the Player:



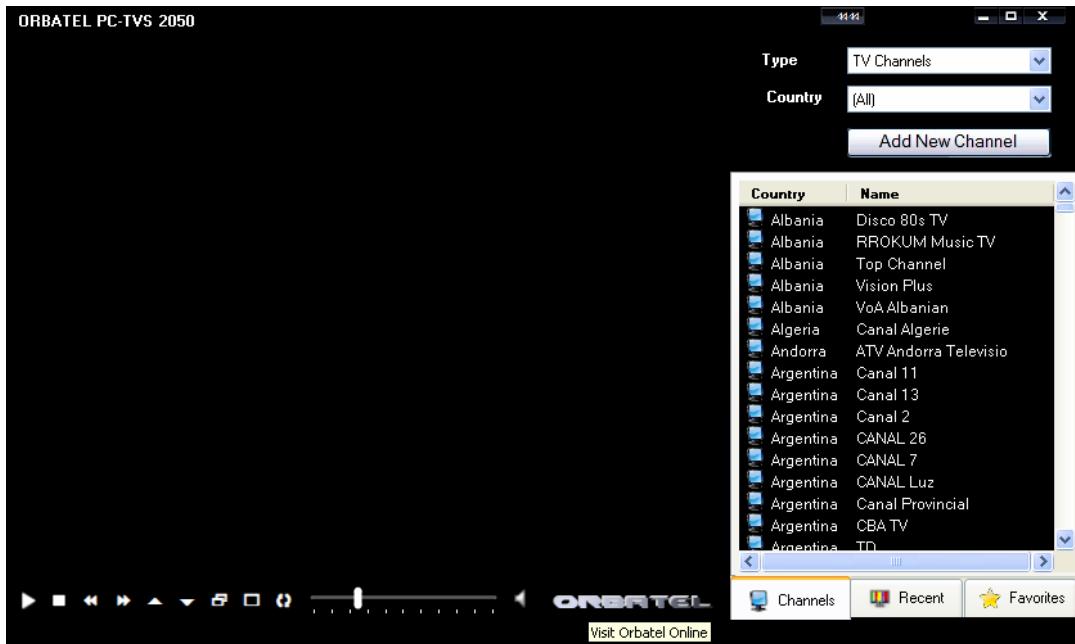
6. Once installation is complete, you will be shown the following summary screen. Click **Close** to end the Installer:



IV. Configuration and Usage

1. Browsing Channels

When you first launch the Orbatel PC-TVS 2050 Satellite Player, you are provided with a list of preconfigured TV and Radio channels in the **Channel Selection Pane**, which is on the right margin of the application interface:



Above this pane are two **Channel Filters**, enabling you to filter the stations displayed based on the following criteria:

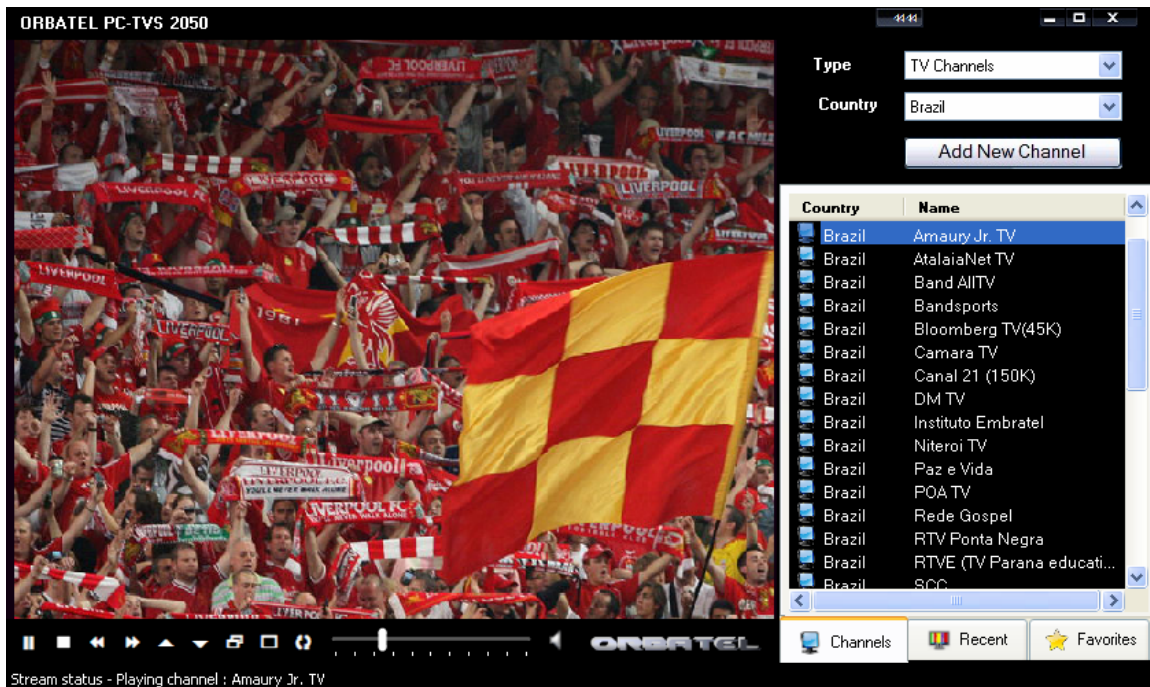
- **Type:** Browse either TV Channels or Radio Channels. Additionally, you may select My Orbatel to see a lineup of all the channels you have put together.
- **Country:** Browse the channels available for a specific country, or those across all countries (the default option).

Use the above filters to narrow your channel results. Then, scroll up and down the Channel Selection Pane to find a channel you would like to access.

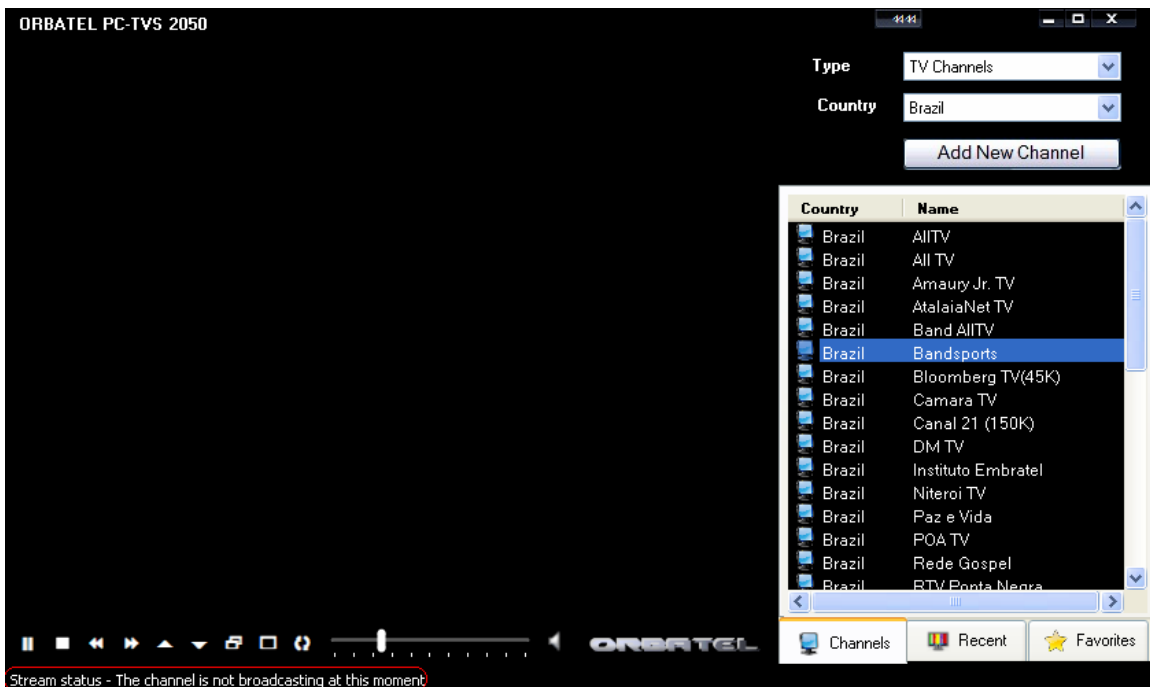
2. Playing a Channel

Once you have found a channel to play, simply double-click on the channel name to launch its stream.

If the channel is active, you will be able to view and/or hear the stream, as shown below:



If the channel is not active, you will see the following message on the Stream Status bar: *“Stream status – the channel is not broadcasting at the moment”*:

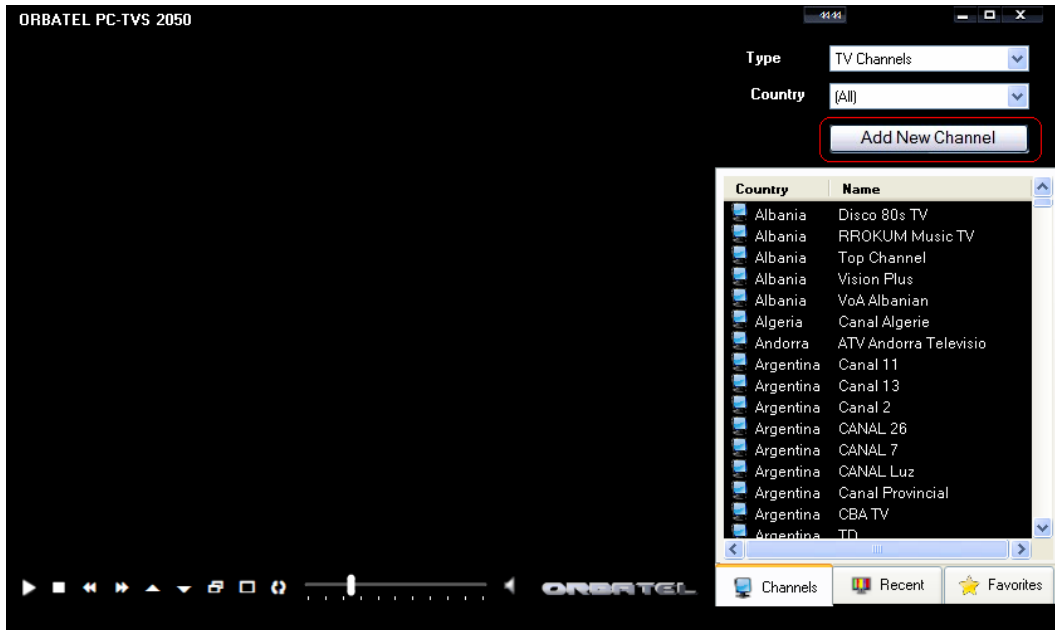


Above the Stream Status bar, you will note the following controls (from left to right):

- ***Pause / Play Button:*** When a video is being played, pauses that video. Click the button again to restart playback of the video.
- ***Stop Button:*** These are used to start and stop a stream.
- ***Previous / Next Buttons:*** Automatically moves to the previous or next channel being displayed in the Channel Selection Pane.
- ***Increase / Decrease Window Buttons:*** These buttons will incrementally expand or contract the size of the Orbatel Player window.
- ***“Always On Top” Button:*** A setting to pin the Orbatel Player window to the foreground of your desktop. Click the button once to activate this mode, and click it again to deactivate.
- ***Full-Screen Button:*** Plays a TV channel in full-screen mode. Press escape on your keyboard to exit full-screen mode.
- ***Continuous Play Button:*** Click this button once to activate continuous play mode, which will continuously cycle through playback of a list of selected videos, or the videos that comprises your “Favorites List.” Click this button again to deactivate this mode.
- ***Volume Control:*** Slide control to adjust the volume level.
- ***Mute Button:*** Click once to mute all sound; click again to unmute.
- ***Orbatel Home Button:*** Click the Orbatel Logo to visit Orbatel’s home page, where you can download the latest releases and updates to our software.

3. Adding Channels

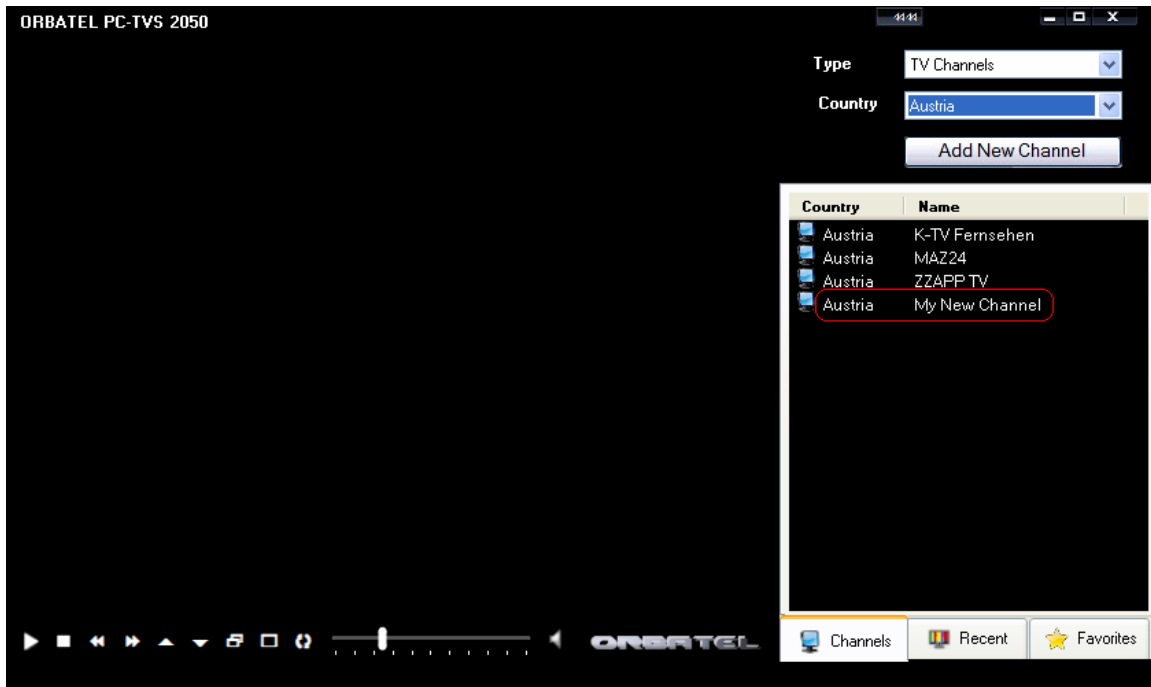
To add a new channel to your list of channels, click on the “Add New Channel” button above the Channel Selection Panel:



This launches a dialog box that enables you to enter the information required to configure a new station:

The screenshot shows a dialog box titled 'Orbatal PC-TVS 2050' with a close button (X). The dialog has a red header 'Enter channel information'. It contains five labeled input fields: 'Channel Type' (dropdown menu set to 'Television'), 'Country' (dropdown menu set to 'Austria'), 'Name of channel' (text box containing 'My New Channel'), 'Stream Address' (text box containing 'http://video.go.com/stream/go.mpeg'), and 'Information Address' (text box containing 'http://video.go.com/info/goInfo.html'). At the bottom, there are two buttons: 'OK' and 'Cancel'.

Click OK to save your changes, and you will now be able to browse to and select your newly configured channel, which will appear at the bottom of the list of channels configured for the selected "Country":



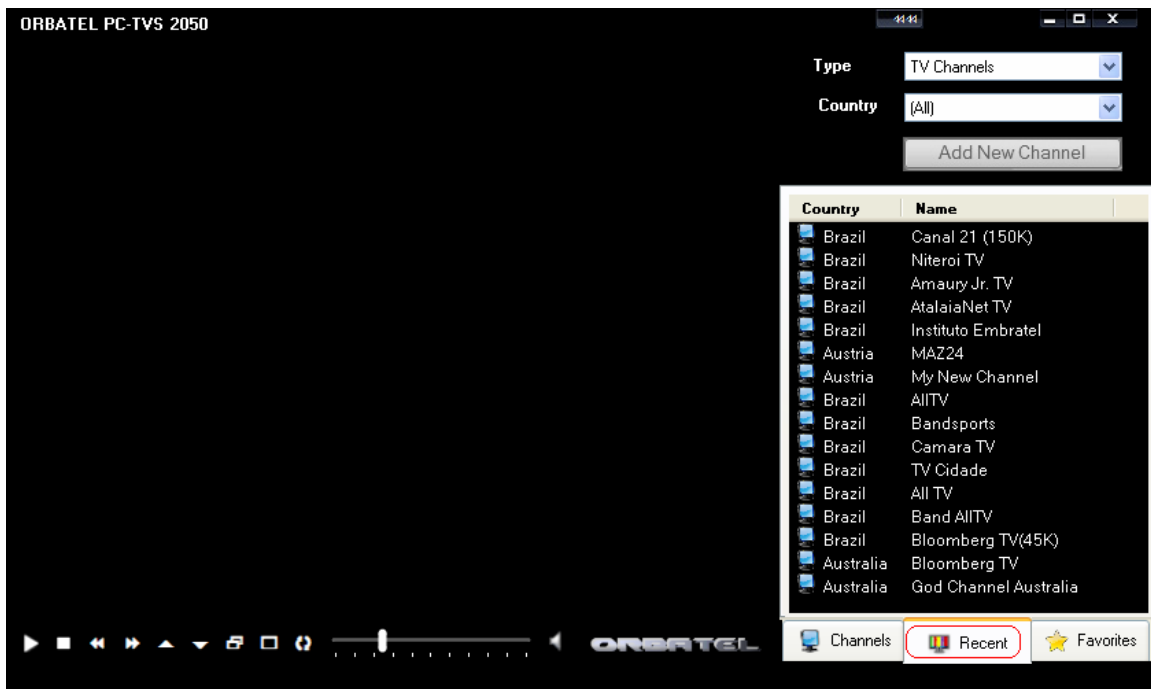
When you next start the Orbatel player, the new channel will be alphabetized under the country selected during creation.

Tip: Using the Add New Channel feature, you can also add your favorite videos clips by URL. Install your favorite videos from YouTube and other video sites by looking on the page that the video is on and getting the video URL from the "Embed" code. In the below example, the Embed code is highlighted in yellow:

```
<object width="425" height="350"><param name="movie"
value="http://www.youtube.com/v/9leR0bNtRvQ"></param>
<param name="wmode" value="transparent"></param>
<embed src="http://www.youtube.com/v/9leR0bNtRvQ"
type="application/x-shockwave-flash" wmode="transparent" width="425"
height="350"></embed></object>
```

4. Recently Viewed & Favorite Channels

To access a list of channels you have recently viewed, simply click on the "Recent" tab, which is located below the Channel Selection Pane:



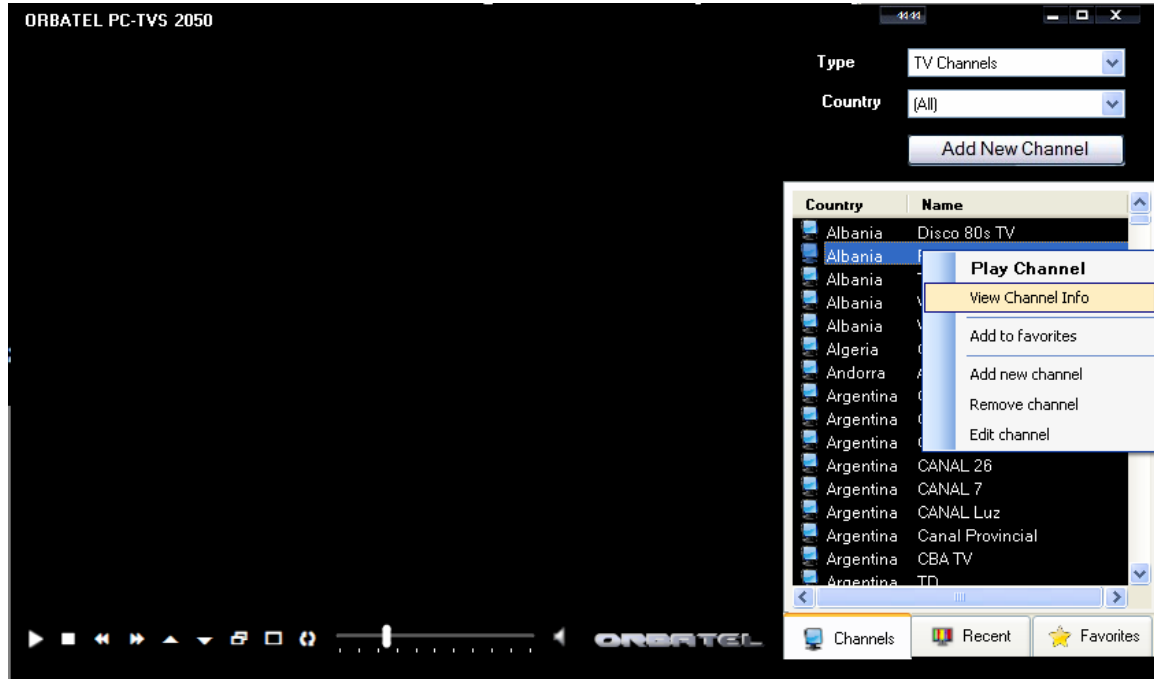
To access your favorite channels, click on the “Favorites” tab, directly next to it:



Tip: In the Favorites pane, you can use the checkboxes next to each station name to select multiple channels on which to perform an operation (such as “Delete”).

5. Shortcuts

By right-clicking on a channel name, you are presented with a context menu with several options:



The following functions are available to you:

- **Play Channel:** Launches the channel.
- **View Channel Info:** Takes you to the website (if configured) where additional information regarding this channel can be found.
- **Add to Favorites:** Add the channel to your favorites list.
- **Add New Channel:** Launches the “Add New Channel” dialog.
- **Remove Channel:** Deletes the channel.
- **Edit Channel:** Launches the dialog pre-populated with the selected channel’s information, so that you can make modifications.

You can also hide the Channel Selection Pane altogether by clicking the button directly above the Channel Filters:



Clicking the same button displays the Channel Selection Pane once again.

V. Contact Information

We are interested in hearing your feedback on the Orbatel PC-TVS 2050 Satellite Player!

For additional information on our products, or to provide feedback or suggestions, please visit us online at <http://www.orbatel.com> or contact us via email: support@orbatel.com