

802.11b WLAN USB Module

User Manual

Version 1.0

No part of this documentation may be reproduced in any form or by any means or used to make any derivative work (such as translation, transformation, or adaptation) without written permission from the copyright owner.

All the other trademarks and registered trademarks are the property of their respective owners.

Statement of Conditions

We may make improvements or changes in the product described in this documentation at any time. The information regarding to the product in this manual are subject to change without notice.

We assume no responsibility for errors contained herein or for direct, indirect, special, incidental, or consequential damages with the furnishing, performance, or use of this manual or equipment supplied with it, even if the suppliers have been advised of the possibility of such damages.

Electronic Emission Notices

This device complies with Part 15 of the FCC Rules. Operation is subject to the following two conditions:

(1) This device may not cause harmful interference.

(2) This device must accept any interference received, including interference that may cause undesired operation.

FCC INFORMATION

The Federal Communication Commission Radio Frequency Interference Statement includes the following paragraph:

The equipment has been tested and found to comply with the limits for a Class B Digital Device, pursuant to part 15 of the FCC Rules. These limits are designed to provide reasonable protection against harmful interference in a residential installation. This equipment generates, uses and can radiate radio frequency energy and, if not installed and used in accordance with the instruction, may cause harmful interference to radio communication. However, there is no guarantee that interference will not occur in a particular installation. If this equipment does cause harmful interference to radio or television reception, which can be determined by turning the equipment off and on, the user is encouraged to try to overcome the interference by one or more of the following measures:

- Reorient or relocate the receiving antenna.
- Increase the separation between the equipment and receiver.
- Connect the equipment into an outlet on a circuit different from that to which the receiver is connected.
- Consult the dealer or an experienced radio/TV technician for help.

The equipment is for home or office use.

R&TTE Compliance Statement

This equipment complies with all the requirements of the Directive 1999/5/EC of the European parliament and the council of 9 March 1999 on radio equipment and telecommunication terminal Equipment and the mutual recognition of their conformity(R&TTE).

The R&TTE Directive repeals and replaces in the directive 98/13/EEC. As of April 8, 2000.

IMPORTANT NOTE

FCC RF Radiation Exposure Statement: This equipment complies with FCC RF radiation exposure limits set forth for an uncontrolled environment. This equipment should be installed and operated with a minimum distance of 20cm between the antenna and your body and must not be co-located or operating in conjunction with any other antenna or transmitter.

Caution: Changes or modifications not expressly approved by the party responsible for compliance could void the user's authority to operate the equipment.

STATEMENT FOR MODULAR APPROVAL

This product is sold to OEM integrators only. The manual for the OEM integrators must include some instructions to be followed by the end users in the user manual. For example:

- The OEM integrators must be instructed to ensure that the end user has no manual instructions to remove or install the device.
- The OEM integrators must be instructed about the end product labeling ("Contains TX FCC ID: QDWWM168b") etc.

Please add the following statements to the manuals for the OEM integrators:

This device is intended only for OEM integrators under the following conditions:

- 1) The antenna must be installed such that 20 cm is maintained between the antenna and users, and
- 2) The transmitter module may not be co-located with any other transmitter or antenna.

As long as the 2 conditions above are met, further transmitter test will not be required. However, the OEM integrator is still responsible for testing their end product for any additional compliance requirements required with this module installed (for example, digital device emissions, PC peripheral requirements, etc.).

IMPORTANT NOTE: In the event that these conditions cannot be met (for example certain laptop configurations or co-location with another transmitter), then the FCC authorization is no longer considered valid and the FCC ID cannot be used on the final product. In these circumstances, the OEM integrator will be responsible for re-evaluating the end product (including the transmitter) and obtaining a separate FCC authorization.

End Product Labeling

This transmitter module is authorized only for use in device where the antenna may be installed such that 20 cm may be maintained between the antenna and users (for example, access points, routers, wireless ADSL modems, and similar equipment). The final end product must be labeled in a visible area with the following: "Contains TX FCC ID: QDWWM168b".

Manual Information for End Users

The end user must not have manual instructions to remove or install the device.

The user manual for end users must include the following information in a prominent location.

"IMPORTANT NOTE: To comply with FCC RF exposure compliance requirements, this grant is applicable to only Mobile Configurations. The antennas used for this transmitter must be installed to provide a separation distance of at least 20 cm from all persons and must not be co-located or operating in conjunction with any other antenna or transmitter.

Table of Contents

1. INTRODUCTION	1
1.1 Features.....	1
1.2 Package Contents	1
1.3 System Requirements	2
1.4 The 802.11b Wireless LAN USB Module	2
2. INSTALLATION OF THE 802.11b WIRELESS LAN USB MODULE	3
2.1 Installing the WLAN Driver	3
2.2 Installation Notes - Windows XP	5
2.3 Verifying a Successful Installation.....	7
3. CONFIGURATION FOR WINDOWS XP	8
To Connect an Available Network via Wireless Zero Configuration	8
To Configure the Wireless Networks Properties	9
To Access to Certain Wireless Network Type	11
4. WLAN PRISM3 IEEE802.11b BASICS.....	13
4.1 Tray Icon	13
4.2 Right-Click Menu of the Tray Icon	13
<i>Wireless Radio On</i>	14
<i>Wireless Radio Off</i>	14
<i>Remove Status Icon</i>	14
<i>Wireless Network Status</i>	14
<i>Advanced Configuration</i>	15
<i>WEP Encryption</i>	15
<i>Version Information</i>	15
4.3 The Functions of WLAN PRISM3 IEEE802.11b	15
<i>The Status Tab</i>	15
State	16
Current Tx Rate	16
Current Channel	16
Throughout (bytes/sec).....	16
Link Quality	17

Signal Strength	17
<i>The Configuration Tab</i>	17
Profile Name	17
Network Name	18
Network Type	18
Peer-to-Peer Channel.....	18
Transmit Rate	18
<i>The Encryption Tab</i>	18
Encryption (WEP security).....	19
Create Key Manually	19
Use WEP Key	20
Create Keys with Passphrase.....	20
<i>The About Tab</i>	20
Network Driver	20
Configuration Utility	20
NIC Firmware	20
APPENDIX A: TROUBLESHOOTING	21
Uninstall WLAN PRISM3 IEEE802.11b and the Module's Driver	21
The 802.11b WLAN USB Module Does Not Work Properly	23
Upgrade WLAN PRISM3 IEEE802.11b and the Module's Driver	24
Reset the Country Selection.....	25
APPENDIX B: SPECIFICATIONS.....	27
APPENDIX C: GLOSSARY	28

List of Figures

FIGURE 1-1: 802.11b WIRELESS LAN USB MODULE.....	2
FIGURE 2.1-1: THE STARTUP WINDOW	3
FIGURE 2.1-2: THE WLAN PRISM3 IEEE802.11b WINDOW	4
FIGURE 2.1-3: THE REBOOT SCREEN.....	4
FIGURE 2.2-1: THE WLAN PRISM3 IEEE802.11b TRAY ICON	5
FIGURE 2.2-2: THE PRISM WIRELESS SETTINGS DIALOG BOX.....	5
FIGURE 2.2-3: THE WIRELESS NETWORK CONNECTION STATUS DIALOG BOX	6
FIGURE 2.2-4: THE WIRELESS NETWORK CONNECTION PROPERTIES DIALOG BOX.....	6
FIGURE 2.3-1: THE DEVICE MANAGER DIALOG BOX	7
FIGURE 3-1: THE WIRELESS NETWORK CONNECTION ICON.....	8
FIGURE 3-2: THE CONNECT TO WIRELESS NETWORK DIALOG BOX	8
FIGURE 3-3: THE CONNECT TO WIRELESS NETWORK DIALOG BOX	9
FIGURE 3-4: THE WIRELESS NETWORK CONNECTION PROPERTIES DIALOG BOX.....	9
FIGURE 3-5: THE WIRELESS NETWORK PROPERTIES DIALOG BOX	10
FIGURE 3-6: ENTER WEP	11
FIGURE 3-7: SETTING UP WIRELESS NETWORK CONFIGURATION	11
FIGURE 3-8 THE ADVANCED DIALOG BOX:	12
FIGURE 4.2-1: RIGHT-CLICK MENU OF THE TRAY ICON	14
FIGURE 4.2-2: THE REMOVE WIRELESS STATUS ICON DIALOG BOX	14
FIGURE 4.3-1: THE PRISM WIRELESS SETTINGS DIALOG BOX.....	15
FIGURE 4.3-2: THE STATUS TAB.....	16
FIGURE 4.3-3: THE CONFIGURATION TAB.....	17
FIGURE 4.3-4: THE ENCRYPTION TAB	19
FIGURE 4.3-5: THE ABOUT TAB	20
FIGURE 5-1: THE DEVICE MANAGER DIALOG BOX	21
FIGURE 5-2: THE CONFIRM DEVICE REMOVAL MESSAGE BOX.....	22
FIGURE 5-3: THE ADD OR REMOVE PROGRAMS DIALOG BOX	22
FIGURE 5-4: THE WLAN PRISM3 IEEE802.11b WINDOW	23
FIGURE 5-5: THE WLAN PRISM3 IEEE802.11b MESSAGE BOX	23
FIGURE 5-6: THE DEVICE MANAGER DIALOG BOX.....	24
FIGURE 5-7: THE UPGRADE DEVICE DRIVER WIZARD DIALOG BOX.....	25
FIGURE 5-8: THE COMPLETE SCREEN	25
FIGURE 5-9: THE COUNTRY SELECTOR DIALOG BOX	26

1. INTRODUCTION

The 802.11b Wireless LAN USB Module aims to let your laptop computer quickly and seamlessly communicate with 802.11b (at up to 11 Mbps) networks. Wireless LAN is local area networking without wires, which uses radio frequencies to transmit and receive data between PC's or other network devices. With this wireless LAN USB Module, surfing on the Internet couldn't be any easier. Simply insert the USB Module into the mini PCI slot of your laptop computer, launch the attached friendly-interfaced program –**WLAN PRISM3 IEEE802.11b** to configure the Module, and then you will have been ready to experience how the LAN (local area network) can be carried in your palm or pocket. You can operate the network in either an independent mode or an infrastructure mode. The former, which is also known as peer-to-peer or ad-hoc network, lets you directly make connection with other wireless-equipped computers, and the later, the so-called infrastructure network, allows you to communicate with wired LAN via an access point.

To obtain most benefits your 802.11b Wireless LAN USB Module provides, please read this manual carefully before using it.

1.1 Features

With 802.11b Wireless LAN USB Module, you can

- * exchange data over the air, which minimizes the need for wired connections
- * possess the portability and mobility of wireless networking connectivity wherever you are
- * operate Ad-Hoc or Infrastructure mode
- * utilize up to 128-bit WEP encryption
- * enjoy high-speed data transfer rate up to 11 Mbps
- * employ automatic data rate switching which offers maximum reliability, throughput and connectivity
- * monitor and configure the network via the supplied friendly-interfaced application –**WLAN PRISM3 IEEE802.11b**

1.2 Package Contents

Before starting installation, please make sure the package you purchased includes the following items:

- * One 802.11b Wireless LAN USB Module
- * One Setup Wizard CD-ROM with Quick Installation Guide
- * One User Manual

If any of the items listed above is missing or damaged, please contact your distributor.

1.3 System Requirements

To properly operate your 802.11b Wireless LAN USB Module, your computer must meet the following minimum requirements:

- * 32 MB RAM or above
- * A CD-ROM drive
- * 300 MHz processor or higher
- * Microsoft Windows 98 Second Edition/Me/2000 or Windows XP

1.4 The 802.11b Wireless LAN USB Module

Your 802.11b Wireless LAN USB Module should be located in the USB port on the back panel of your laptop computer, and it looks like the following picture:

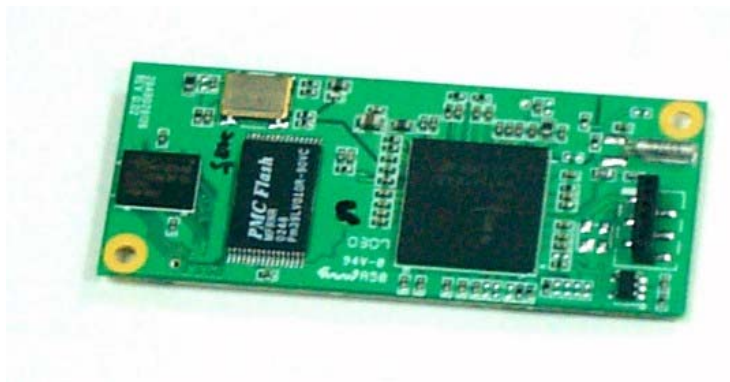


Figure 1-1: 802.11b Wireless LAN USB Module

2. INSTALLATION OF THE 802.11b WIRELESS LAN USB MODULE

It's free and easy for you to install your 802.11b Wireless LAN USB Module and the attached software - **WLAN PRISM3 IEEE802.11b**. Simply with a few clicks of the mouse, you will succeed the completion of installation.

To have the 802.11b WLAN USB Module operated appropriately, please read and go along with the instructions below carefully.

2.1 Installing the WLAN Driver

- a) Insert the Utility CD into your CD-ROM drive, and open Utility\Wireless LAN folder to run **AutoRun.exe**.
- b) From the prompted startup window, choose **WLAN Driver** to begin the installation.



Figure 2.1-1: The Startup Window

- c) Click **Next** in the **WLAN PRISM3 IEEE802.11b** window to proceed. The system will start to copy the drivers found.

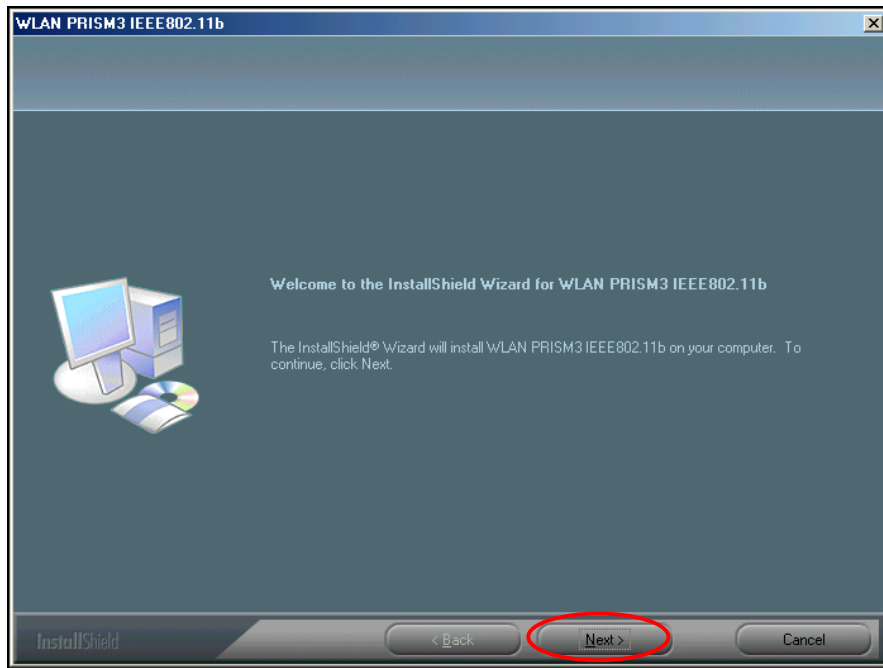


Figure 2.1-2: The **WLAN PRISM3 IEEE802.11b** Window

- d) On the **Reboot** screen, choose **Yes, I want to restart my computer now**, and then click **Finish** to restart the computer.

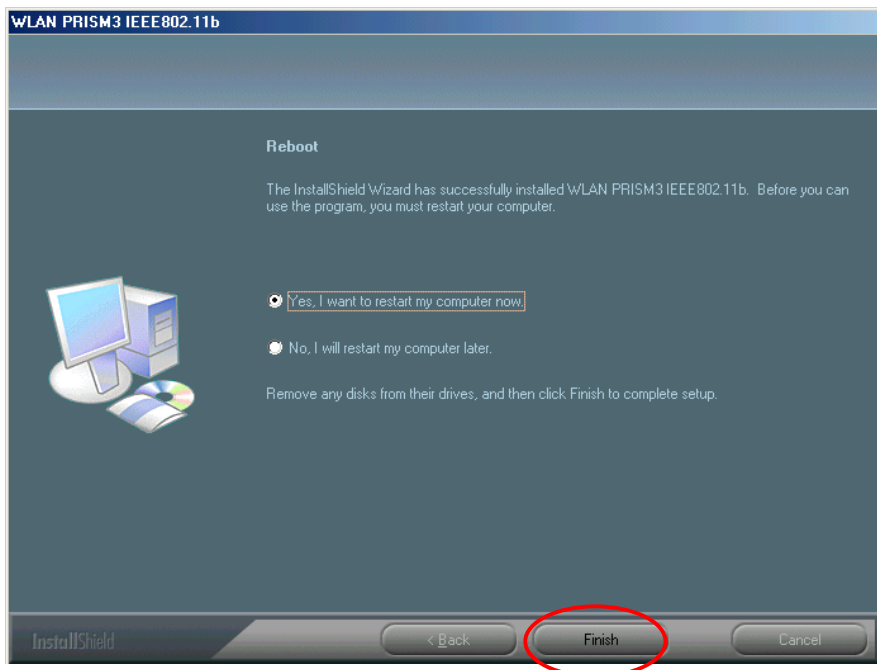



Figure 2.1-3: The **Reboot** Screen

- e) After rebooting, you will find the **WLAN PRISM3 IEEE802.11b** icon, , appeared in the system tray. The installation is entirely finished at the moment. Double-click the icon to

launch the application and open the **PRISM Wireless Settings** dialog box, in which you may freely arrange your network connection afterwards.

For more details about **WLAN PRISM3 IEEE802.11b**, please refer to **WLAN PRISM3 IEEE802.11b Basics** in this manual.

2.2 Installation Notes - Windows XP

If your current system is running Windows XP, you shall find that two tabs are contained in the **PRISM Wireless Settings** dialog box after you've followed the instructions above and successfully installed the drivers. However, normally, the dialog box should be consisted of four tabs. This is because Windows XP has its built-in configuration tools – **Windows XP Zero Configuration** to assist you in networking activities. It is recommended to utilize the attached **WLAN PRISM3 IEEE802.11b** to enjoy more benefits it will bring. Thus, to employ your **WLAN PRISM3 IEEE802.11b** under Windows XP, please proceed to the next step to change the default settings of **Windows Zero Configuration** to **WLAN PRISM3 IEEE802.11b**.

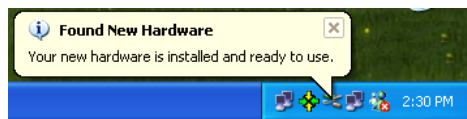


Figure 2.2-1: The **WLAN PRISM3 IEEE802.11b** Tray Icon

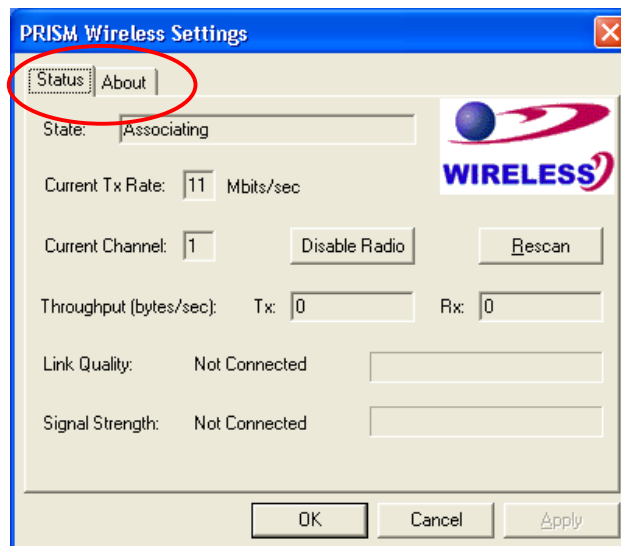


Figure 2.2-2: The **PRISM Wireless Settings** Dialog Box

- a) Right-click the **Network Connections** icon at the task bar to open the **Wireless Network Connection Status** dialog box, and then select **Properties**.



Figure 2.2-3: The **Wireless Network Connection Status** Dialog Box

- b) Choose the **Wireless Networks** tab in the **Wireless Network Connection Properties** dialog box, and remove the tick from the **Use Windows to configure my wireless network settings** checkbox.

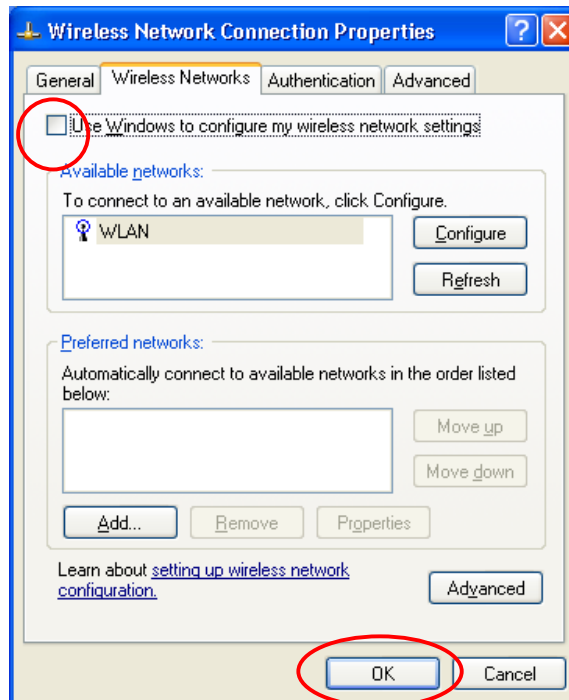


Figure 2.2-4: The **Wireless Network Connection Properties** Dialog Box

- c) Click **OK**. Now, you have successfully removed the **Windows Zero Configuration**.

To monitor and configure the network via **WLAN PRISM3 IEEE802.11b**, double-click its

tray icon, and you shall find four tabs contained in the popped up **PRISM Wireless Settings** dialog box this time. For more information on **WLAN PRISM3 IEEE802.11b**, please refer to **WLAN PRISM3 IEEE802.11b Basics** below.

*Note: If you wish to use Windows XP's built-in configuration tools – **Windows XP Zero Configuration**, please refer to the next chapter: **Configuration for Windows XP** to configure the WLAN USB Module.*

2.3 Verifying a Successful Installation

To confirm that your 802.11b Wireless LAN USB Module is properly installed, please go along with the procedures below.

1. Right-click the **My Computer** desktop icon and choose **Properties** from the opened menu.
2. In the **System Properties** dialog box, choose **Device Manager** if you are under Windows 98 or Me. If you are operating Windows 2000 or XP, click the **Hardware** tab, and then choose the **Device Manager** button.
3. In the opened window, expand **Network adapters** to find the USB Module - **WirelessLAN PRISM3 IEEE802.11b WM168 USB Module**. Right-click over the item and choose **Properties**.
4. From the opened dialog box, on the **General** tab, find the descriptions under the **Device Status** pane to learn if the module is working properly. However, if there's an error message shown, please choose **Uninstall** from the opened menu while right-clicking over the USB Adapter item, to which a red or yellow icon is attached beside, in the **Device Manager** dialog box. Then restart your system and go through the installation procedures again.

The following picture indicates a successful installation of the 802.11b Wireless LAN USB Module.

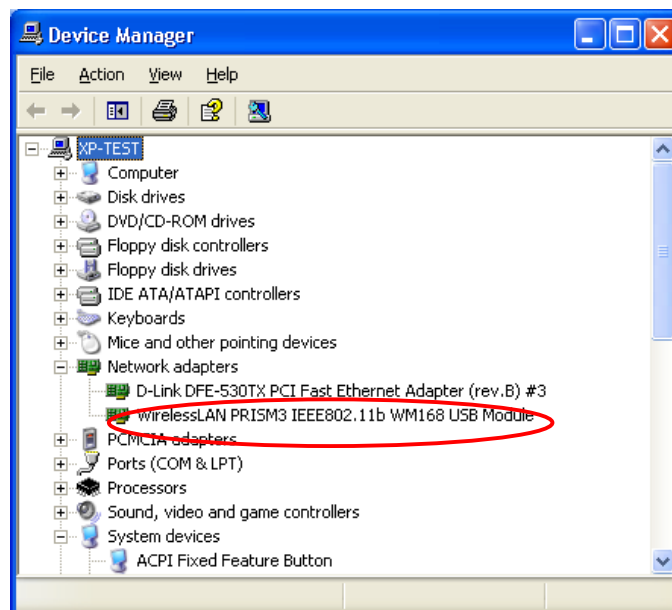


Figure 2.3-1: The **Device Manager** Dialog Box

3. CONFIGURATION FOR WINDOWS XP

As you have already known, Windows XP has its built-in configuration tools – **Windows XP Zero Configuration**, to assist you in some basic configurations of wireless network connection. The service starts right after the completion of the installation of 802.11b WLAN USB Module, and you will find the icon automatically appears in your system tray like the following picture shows.



Figure 3-1: The **Wireless Network Connection** Icon

Please refer to the desired topics below to look for more details about utilizing your 802.11b WLAN USB Module via **Wireless Zero Configuration**.

To Connect an Available Network via Wireless Zero Configuration

1. Double-click the **Wireless Network Connection** icon.
2. In the opened **Connect to Wireless Network** dialog box, the currently available networks are listed in the **Available networks** field. From the list, choose an item that you intend to make an association.
3. If the chosen entry requires a WEP encryption key and also automatically provides it, leave the **Network Key** field blank and then choose the **Connect** button to build the connection. Otherwise, you will need to manually enter the identical key in the **Network Key** field before clicking **Connect**.

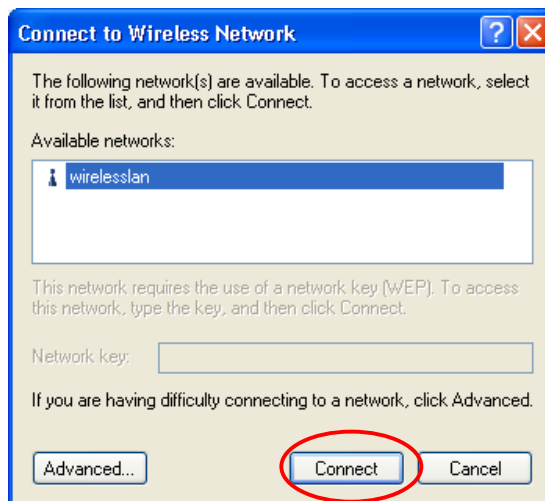


Figure 3-2: The **Connect to Wireless Network** Dialog Box

4. If the connection is established, there will be a pop-up message shown beside the **Wireless Network Connection** icon on the system tray. You could obtain the information on the status of connection from the message.

To Configure the Wireless Networks Properties

If you cannot establish a connection with the chosen entry or you wish to configure further wireless network connection settings, choose the **Advanced** button in the **Connect to Wireless Network** dialogue box.

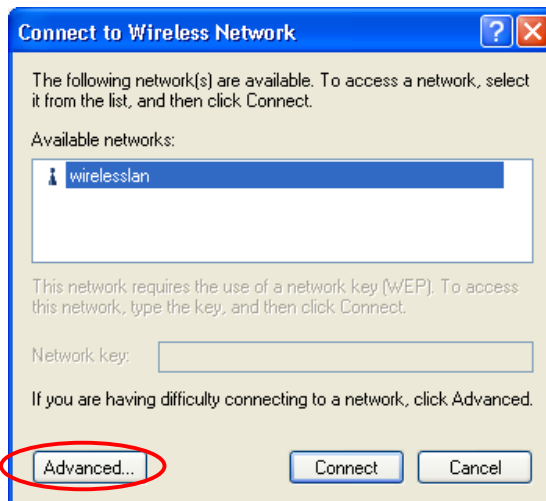


Figure 3-3: The **Connect to Wireless Network** Dialog Box

After clicking **Advanced**, you will enter into the **Wireless Networks** tab of the **Wireless Network Connection Properties** dialog box, in which three other tabs are found, including **General**, **Authentication**, and **Advanced**. The **Wireless Networks** tab includes almost the main settings for the networking connection. Thus, please check the descriptions below to learn more about the tab.

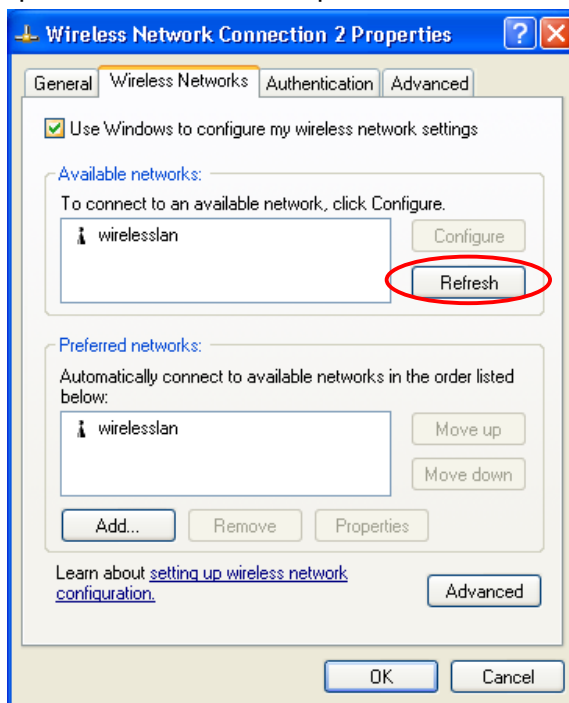


Figure 3-4: The **Wireless Network Connection Properties** Dialog Box

Note: For more detailed information about each tab, please refer to the *Windows XP Online-Help*.

The **Wireless Networks** tab is chiefly consisted of two sections: **Available networks** and **Preferred networks**.

- Under the **Available networks** area, all the available access points or Wireless LAN PC Card equipped computers are displayed. You may wish to click **Refresh** to update the list. If you choose any listed item in the field and then click **Configure**, the **Wireless Network Properties** dialog box will appear as Figure 3-5 shows. Check the description below the figure to obtain more information about the dialog box.
- In the **Preferred networks** area, you could add any displayed networks to the list by clicking over the intended item from **Available networks** and then selecting the **Add** button. After clicking **Add**, the **Wireless Network Properties** dialog box will appear as Figure 3-5 displays. Note that to delete any item under the **Preferred networks** area, simply click on it and then select the **Remove** button. Additionally, you may adjust the items in the list by clicking the desired item and then choosing the **Move up** or **Move down** button. It is, however, important to realize that Windows XP will always choose the first one in the list to establish the networking connection.

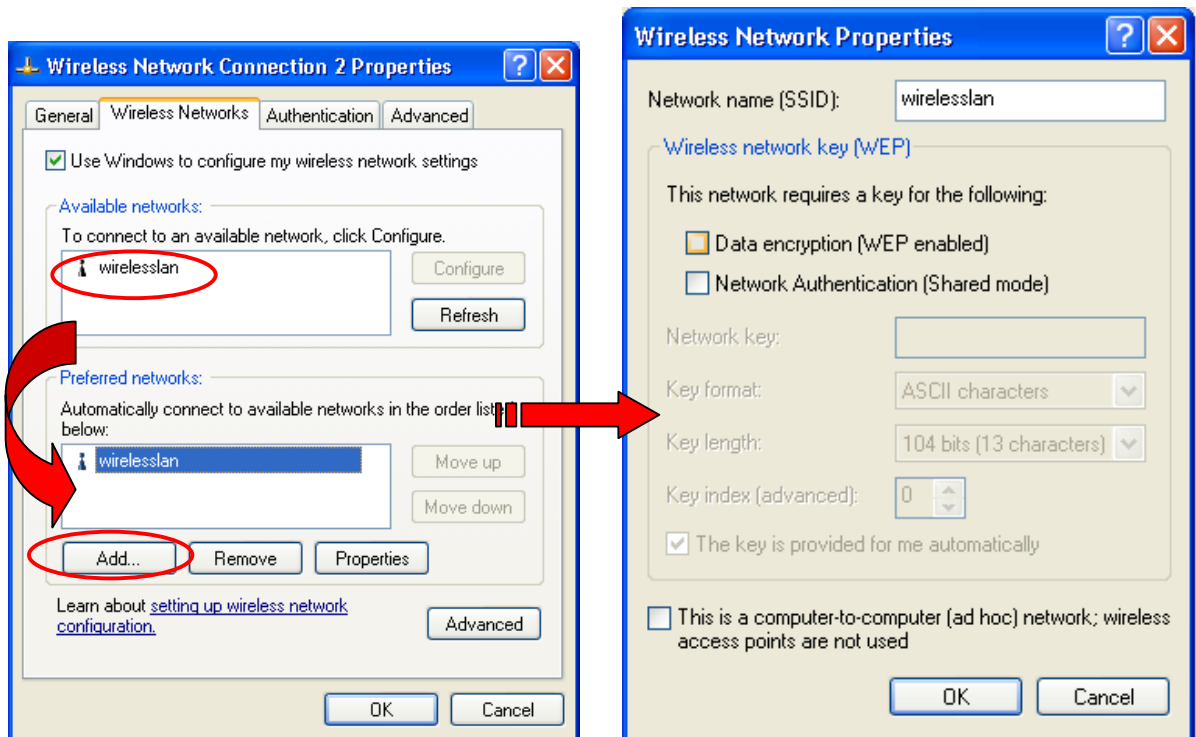


Figure 3-5: The **Wireless Network Properties** Dialog Box

Note: Once you choose an item from the **Preferred networks** list and then click **Properties**, the **Wireless Network Properties** will also be provoked.

- In the opened **Wireless Network Properties** dialog box, edit texts in the **Network Name (SSID)** field to identify the chosen network entry in the wireless LAN.
- If there's a need, go to the **Wireless network key (WEP)** area below to set the keys as the associated access point or Wireless LAN PC Card equipped computer requests. To set WEP, select **Data encryption (WEP enabled)** and **Network Authentication**. Then enter the encryption

keys for the network you intend to connect in the **Network Key** field. Meanwhile, the **Key format** and **Key length** options change the settings according to **Network Key** string you just typed. Click **OK** when you are finished, and you will return to the **Wireless Network Connection Properties** dialog box.

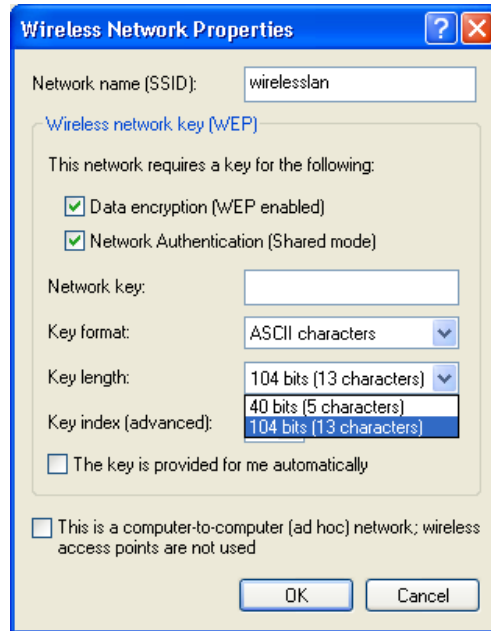


Figure 3-6: Enter WEP

Note: For more details of this tab, you may click the link: [setting up wireless network configuration at the bottom of the **Wireless networks** tab to launch the Windows XP Online-Help.](#)

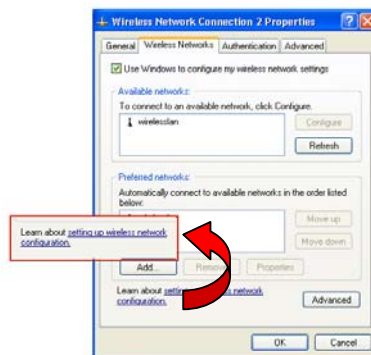


Figure 3-7: Setting up wireless network configuration

To Access to Certain Wireless Network Type

The default network type of **Windows XP Zero Configuration** is any available access points (Access Point mode) or WLAN Card equipped computers (Ad-Hoc mode) within the range at the given time. However, you may wish to connect to a certain network type sometimes. To change the default settings, click the **Advanced** button in the **Wireless Network Connection Properties** dialog box.

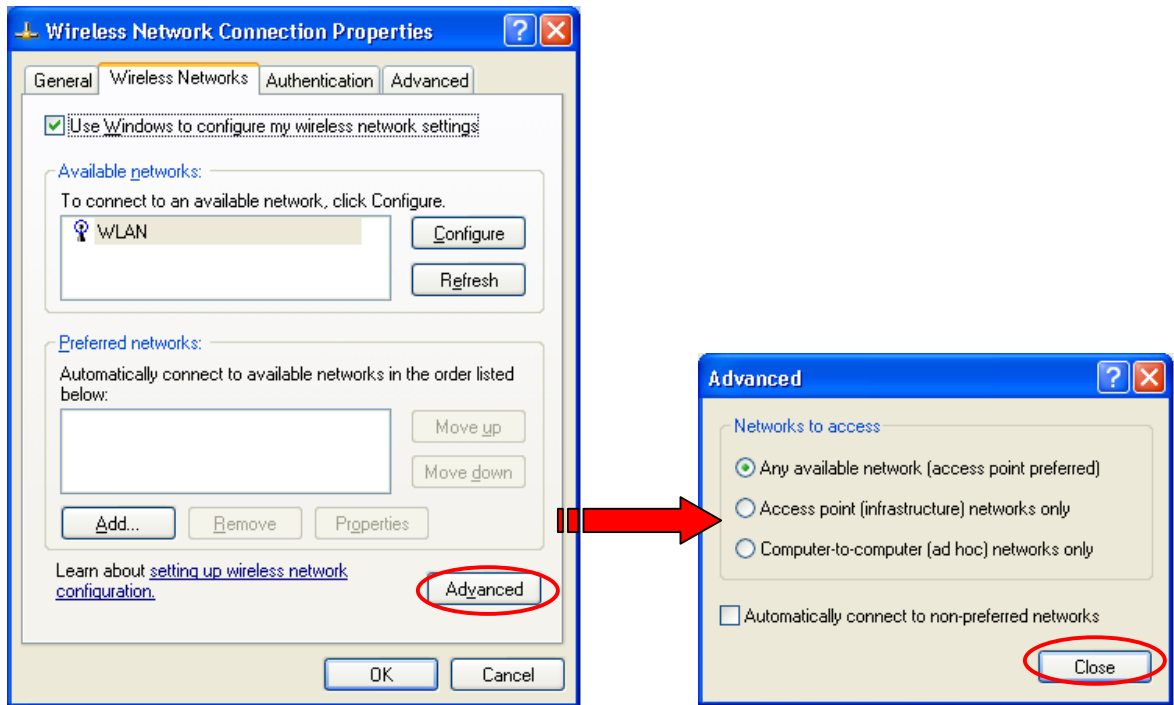



Figure 3-8 The **Advanced** Dialog Box:

The **Advanced** dialog box provides three options, **Any available network**, **Access point networks only**, and **Computer-to-computer networks only**. Choose one of them according to your need and click **Close** to finish. Then you will find under the **Available networks** area in the **Wireless Network Connection Properties** dialog box, only the specified networks are displayed.


Note: If you wish to use the attached application –**WLAN PRISM3 IEEE802.11b** of the 802.11b WLAN USB Module instead of Windows XP's **Wireless Zero Configuration**, please refer to **2.2 Installation Notes –Windows XP** in this manual to change the settings.

4. WLAN PRISM3 IEEE802.11b BASICS






After successfully installing the driver for your 802.11b Wireless LAN USB Module on your computer, you may see the **WLAN PRISM3 IEEE802.11b** icon, , displayed in the system tray. To set configurations for your USB Module, double-click the icon to open the **PRISM Wireless Settings** dialog box, in which four tabs are contained, including **Status**, **Configuration**, **Encryption**, and **About**. Each of them proffers different functions to assist you in configuring the connection to the networks.

In this chapter, three topics are offered: **Tray Icon**, **Right-Click Menu of the Tray Icon**, and **The Functions of WLAN PRISM3 IEEE802.11b**. Please refer to the preferred topic to obtain more information and enjoy vast advantages **WLAN PRISM3 IEEE802.11b** brings.

4.1 Tray Icon


As long as you finish installing **WLAN PRISM3 IEEE802.11b** on your computer system, you will see the **WLAN PRISM3 IEEE802.11b** icon, , shown at the right bottom corner of your screen. When you move the mouse cursor over it, the information on the current link quality is provided in the tips.

Furthermore, the color of the icon varies with the current state of your network connection. Check the list below to learn the definition of each color.

Icon	Quality
	Excellent Link Quality 100%
	Data Frame Errors – Check WEP Settings
	Fair Link Quality
	Poor Link Quality
	Radio Off

Note: The blue icon indicates that you might have entered incorrect WEP keys. To solve the problems, choose the **Configuration** tab in the **PRISM Wireless Settings** dialog box to correct the keys for encryption.

4.2 Right-Click Menu of the Tray Icon

Right-clicking the **WLAN PRISM3 IEEE802.11b** icon, , in the system tray will open a menu as the following picture:

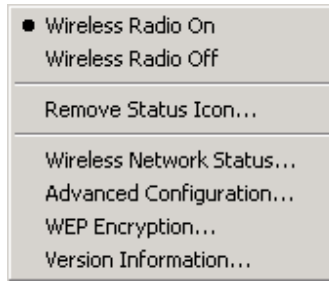


Figure 4.2-1: Right-click Menu of the Tray Icon

Check the descriptions below to obtain detailed information about each command in the menu.

Wireless Radio On

Choose the **Wireless Radio On** command to receive the radio frequency signal.

Wireless Radio Off

Choosing the **Wireless Radio Off** command will stop receiving the radio frequency signal.

Remove Status Icon

If you don't wish to have the **WLAN PRISM3 IEEE802.11b** icon displayed in the system tray, choose this command to open the **Remove Wireless Status Icon** dialog box, and then choose **Yes** to have the icon disappeared. The icon will reappear next time when you restart the computer. If you intend to remove it permanently, put a tick in the checkbox next to the **Remove Status Icon Permanently** option. To launch **WLAN PRISM3 IEEE802.11b** hereafter, click **Start** on the taskbar, choose **Program** from the menu, and then point to **Configuration Tool** from the submenu of **WirelessLAN USB Tools**. Clicking **No** will undo the removal.



Figure 4.2-2: The **Remove Wireless Status Icon** Dialog Box

Wireless Network Status

Choose this command to launch the **Status** tab of the **PRISM Wireless Settings** dialog box. For more details about the tab, please refer to **The Status Tab** in **The Functions of WLAN PRISM3 IEEE802.11b** section below.

Advanced Configuration

Choose this command to launch the **Configuration** tab of the **PRISM Wireless Settings** dialog box. Please refer to **The Configuration Tab** in **The Functions of WLAN PRISM3 IEEE802.11b** section below to gain more information about the tab.

WEP Encryption

Choose this command to launch the **Encryption** tab of the **PRISM Wireless Settings** dialog box. This tab offers you various options to maintain the secure management in a wireless LAN environment. See the explanations in **The Encryption Tab** of **The Functions of WLAN PRISM3 IEEE802.11b** section below for more details.

Version Information

Choosing this command will launch the **About** tab of the **PRISM Wireless Settings** dialog box. The **About** tab reveals general information on your USB Module, including the release version of driver and the **WLAN PRISM3 IEEE802.11b** and the module's MAC Address.

4.3 The Functions of WLAN PRISM3 IEEE802.11b

When you double-click the **WLAN PRISM3 IEEE802.11b** tray icon, the **PRISM Wireless Settings** dialog box will be prompted as the picture shows below. The application is a window-based program, which is consisted of four tabs, including **Status**, **Configuration**, **Encryption**, and **About**.

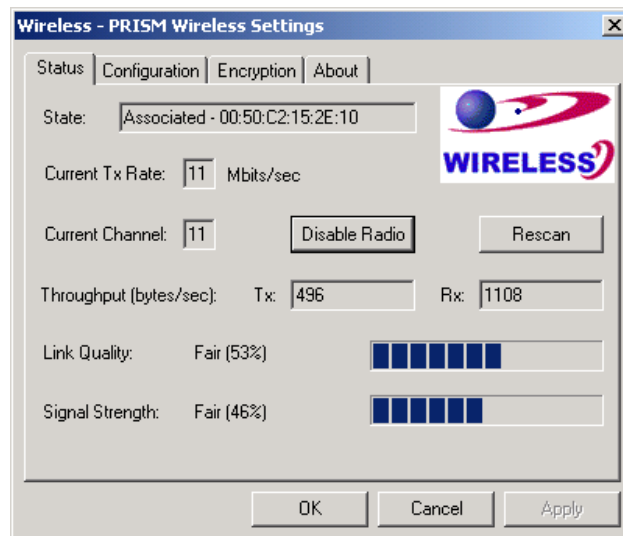


Figure 4.3-1: The **PRISM Wireless Settings** Dialog Box

Check the desired items below to obtain more details about these tabs.

The Status Tab

In the **PRISM Wireless Settings** dialog box, click the **Status** tab to appear the following display. Here presents the status of your current connection. To close the window, click **OK**.

Note: Choosing the **Wireless Network Status** command from the right-click menu of **WLAN PRISM3 IEEE802.11b** tray icon will launch this tab too.

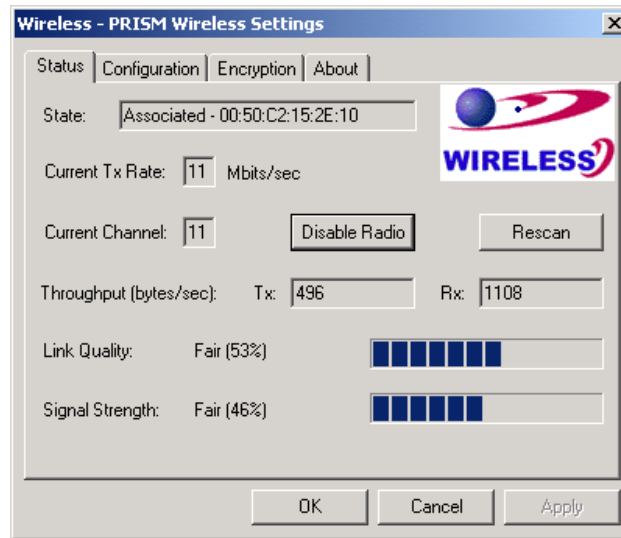


Figure 4.3-2: The **Status** Tab

Note: The texts before "PRISM Wireless Settings" in the caption bar of the dialog box is the profile name of the current connection. Thus, the caption contexts vary according to the connectivity at the given time. From the above picture, the associated profile is named "Wireless".

From the window, the general information on the status of currently connected entry is presented. You may want to click the **Rescan** button to reinitiate the scanning process and update the status. Later the result of scanning will be renewed and displayed in the window. If you wish to stop the networking connection, click the **Disable Radio** button to stop scanning. However, if you are already in the disabled radio mode, you will find the **Enable Radio** button here instead. Click **Enable Radio** to regain the link then.

State

Here displays the MAC Address of the current associated entry, which could be a connected access point in the Infrastructure mode or computers joining in the Ad-Hoc network.

Current Tx Rate

This feature indicates the transmission rate of the current connection.

Current Channel

Here reveals the current channel operated in the wireless network. Note that the channel number differs as the radio scans any available channels in the Infrastructure mode.

Throughput (bytes/sec)

This feature indicates the rates of transmitting (**Tx**) and receiving (**Rx**) data of your WKAN USB module within a short period of time; thus, the values vary on a time basis.

Link Quality

Link Quality is based on the percentage of successfully transmitted or received signal of the associated access point beacon within a limited period. The higher the percentage, the better the link quality. The bar graph beside also provides a visual interpretation of the current link quality. It is noted that the **Link Quality** and **Signal Strength** features only apply to the Infrastructure mode. They are inapplicable in the Ad-Hoc mode since data will be transferred from many different computers.

Signal Strength

You may learn the received signal strength of the baseband processor of the beacon signal from the **Signal Strength** bar beside, and it's also presented in terms of percentage. As the signal gets stronger, the signal percentage rate gets higher. It is noted that the **Signal Strength** and **Link Quality** features only apply to the Infrastructure mode. They are inapplicable in the Ad-Hoc mode since data will be transferred from many different computers.

The Configuration Tab

Click this tab to edit different profiles for different network configurations. When finish changing the settings, please click **Apply** to perform the new configuration at last.

*Note: Choosing the **Advanced Configuration** command from the right-click menu of **WLAN PRISM3 IEEE802.11b** tray icon will launch this tab too.*

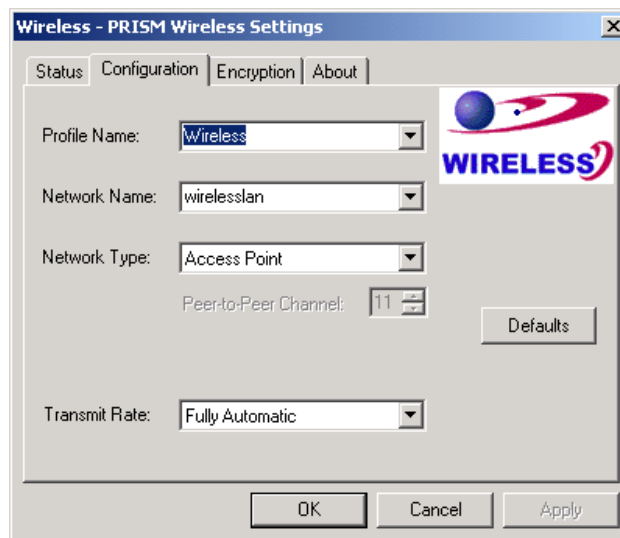


Figure 4.3-3: The **Configuration** Tab

Profile Name

Enter texts in the **Profile Name** field to identify a new profile. After defining the configurations below, click the **Apply** button to establish the profile. To switch between any existing profiles, click the arrow button at the right of the **Profile Name** field to open the pull-down menu and then select an intended one from it.

Note: You will have at least one profile named **ANY**, which allows a link with an Access Point or a Wireless LAN PC Card equipped computer at the given time. When you click the **Defaults** button under the tab, a profile of the current connection is created.

Network Name

Network Name, also known as SSID (Service Set Identifier), must be unique to distinguish itself as a particular wireless network, while all wireless points in this network area share the same SSID. Type the identical SSID in the **Network Name** field to associate with access points or stations within the specified wireless LAN. To change the **Network Name**, highlight the name in the box, edit a new SSID, and then click **Apply** to save the changes.

Network Type

Two network types are offered here: **Access Point** and **Peer-to-Peer**. Choose the intended type from the two options. The **Access Point** mode, which is also known as the Infrastructure mode, allows you to communicate with a wired network via an access point. If you attempt to operate this mode, you must indicate the identical **Network Name** to make a communication with the intended access point. On the other hand, the **Peer-to-Peer** mode provides you with the so-called Ad-Hoc communication, which means each wireless-equipped computers within a group is able to connect with each other as an independent wireless LAN without the use of an access point. Each station within this Ad-Hoc network has to define the same **Network Name**.

Peer-to-Peer Channel

This command is only available while you are operating the **Peer-to-Peer** mode, the so-called Ad-Hoc mode. Specify the operating radio frequency channel from the pull-down menu if you are the creator of the wireless network. If you are the joiner, just configure the SSID and click **Apply**. Note that the available channels differ from country to country, and the channel number must be the same between the entries/stations within the range, so that each can communicate with each other. While in the **Access Point** mode, the channel number would be the same as the associated access point. Thus, there's no need to manually set up the value.

Transmit Rate

This command allows you to indicate the rate of transferring the data packet from the associated access point or any nodes within the range. There are four options for you: **Auto 1 or 2 Mb**, **5.5 Mb**, **11 Mb**, and **Fully Automatic**. Specify the rate from the provided options according to the speed of your wireless network, or you may simply choose **Fully Automatic** to set the best available rate according to the received signal quality and the capabilities of the associated access point or station.

The Encryption Tab

Click the **Encryption** tab to define the encryption settings for a specific profile. It offers you various options concerning the so-called WEP (Wired Equivalent Privacy) to maintain the secure management

in a wireless LAN environment. See the explanations below for more details, and before making an activation of any new settings, click **Apply**. To leave the window, click **OK**. To undo the new settings, select the **Cancel** button.

Note: Choosing the **WEP Encryption** command from the right-click menu of **WLAN PRISM3 IEEE802.11b** tray icon will launch this tab too.

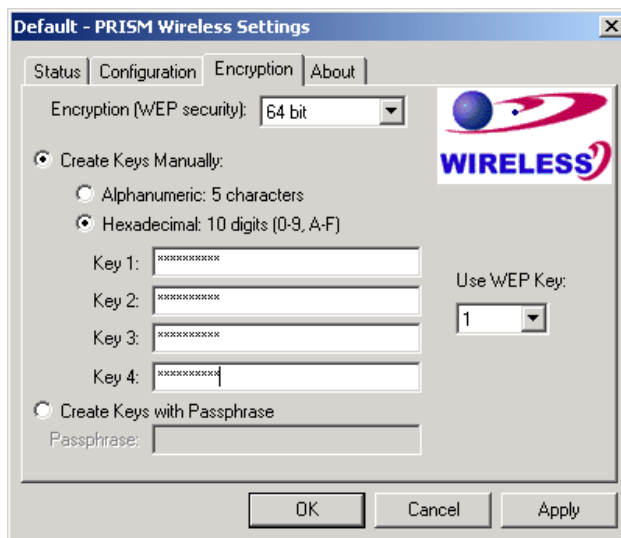


Figure 4.3-4: The **Encryption** Tab

Encryption (WEP security)

If you choose **Disabled** from the pull-down list, you will have the wireless module communicated with all stations within the same networking community without any data encryption. Otherwise, two key lengths are offered: **64 bit** and **128 bit**. Specify a preferred one from the two, so that you may use the identical WEP key to make a communication with the chosen access point.

Create Key Manually

Once you set the **Encryption** type as **64 bit** or **128 bit**, you may choose to edit WEP keys manually or create them via the passphrase of your wireless network. If you choose the **Create Key Manually** option, you may directly enter up to 4 WEP keys for use in WEP encryption. To generate the WEP keys, please define the key entry method as **Alphanumeric** or **Hexadecimal** (for hexadecimal characters, only digits 0-9 and letters A-F are valid). Then edit the texts in the blank fields below, from **Key 1** to **Key 4**, as the encryption codes. Note that these codes/keys shall be identical between the wireless nodes within the range and the access point only. Check the table below to find valid key length of each encryption type:

	64 bit	128 bit
Alphanumeric	5 characters	13 characters
Hexadecimal	10 digits	26 digits

Use WEP Key

Indicate which WEP key you intend to apply to activate the WEP encryption from the pull-down menu. Make sure that the intended access point on the wireless network shares the same keys. By default, **Key 1** will be used.

Create Keys with Passphrase

Choose this command when the associated wireless network uses a passphrase to create WEP keys. Enter the passphrase string in the **Passphrase** field to generate four encryption keys in the **Key** fields above. Note that only letters A-F are valid for the **Passphrase** feature.

After finish configuring the **Encryption** features, remember to click the **Apply** button to initiate the new settings.

The About Tab

This tab reveals general information on your wireless LAN USB Module, including the following items:

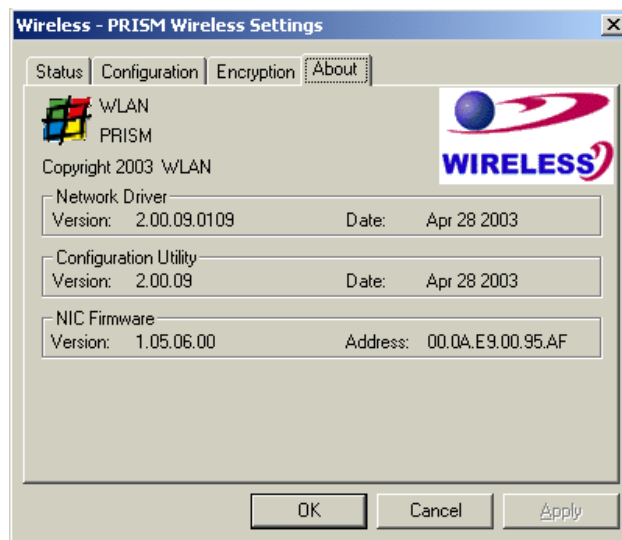


Figure 4.3-5: The **About** Tab

Network Driver

Displays the current version and released date of the 802.11b Wireless LAN USB Module's driver.

Configuration Utility

Displays the current version and released date of the **WLAN PRISM3 IEEE802.11b** application.

NIC Firmware

Displays the current NIC card firmware version and the MAC (Media Access Control) address of your wireless card. It is consisted of 12-digit hexadecimal numbers (48 bits in length) to identify your computer's physical address on the local area network.

APPENDIX A: TROUBLESHOOTING

This section provides solutions to problems that you might encounter during the installation and operation of your 802.11b WLAN USB Module. Please refer to the desired topics below and read the description to solve your problems.

Uninstall WLAN PRISM3 IEEE802.11b and the Module's Driver

Prior to starting the uninstalling, please make sure that **WLAN PRISM3 IEEE802.11b** is closed, and then go along with the procedures below to entirely uninstall **WLAN PRISM3 IEEE802.11b** and the module driver.

1. Right-click the **My Computer** desktop icon and choose **Properties** from the opened menu.
2. In the **System Properties** dialog box, choose **Device Manager** if you are under Windows 98 or Me. If you are operating Windows 2000 or XP, click the **Hardware** tab, and then choose the **Device Manager** button.
3. In the opened window, expand **Network adapters** to find the USB Module - **WirelessLAN PRISM3 IEEE802.11b WM168 USB Module**. Right-click over the item and choose **Uninstall** from the opened menu.

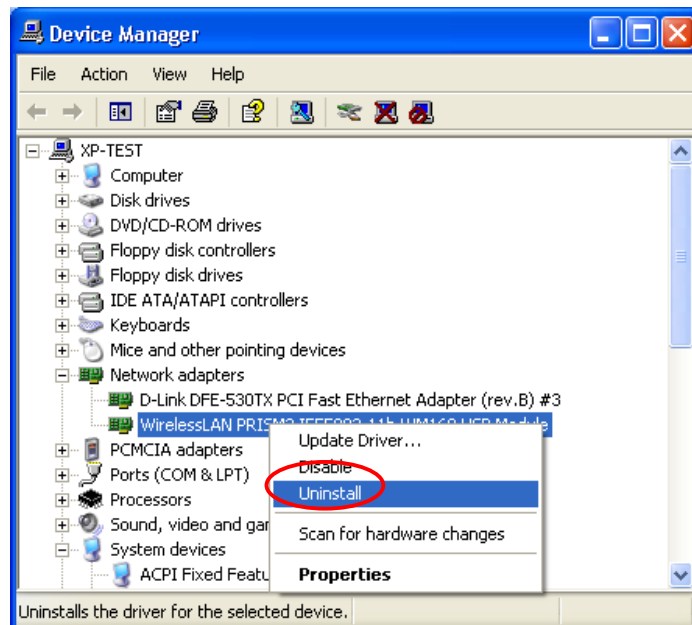


Figure 5-1: The **Device Manager** Dialog Box

4. In the **Confirm Device Removal** message box, click **OK** to proceed with the removal of the hardware.

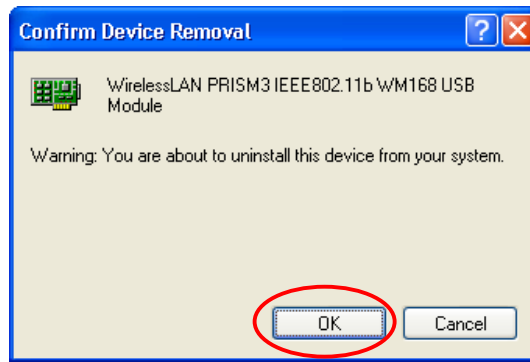


Figure 5-2: The **Confirm Device Removal** Message Box

5. Click **Start** on the taskbar and choose **Control Panel** from the **Settings** menu.
6. Select **Add or Remove Programs** to open the dialog box shown as below.

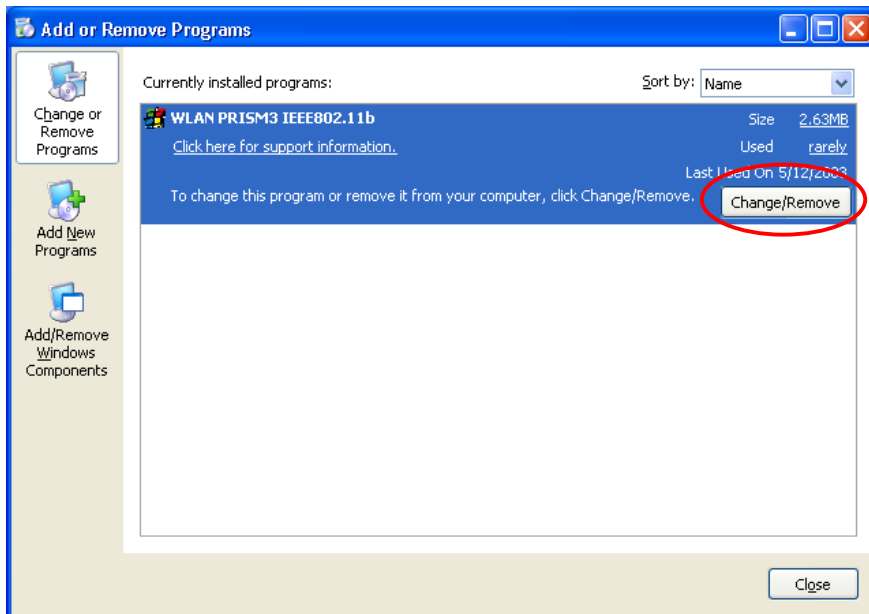


Figure 5-3: The **Add or Remove Programs** Dialog Box

7. Click the **Change/Remove** button under **WLAN PRISM3 IEEE802.11b**.
8. In the prompted **WLAN PRISM3 IEEE802.11b** window, choose the **Remove** option to uninstall the program. Then click **Next**.

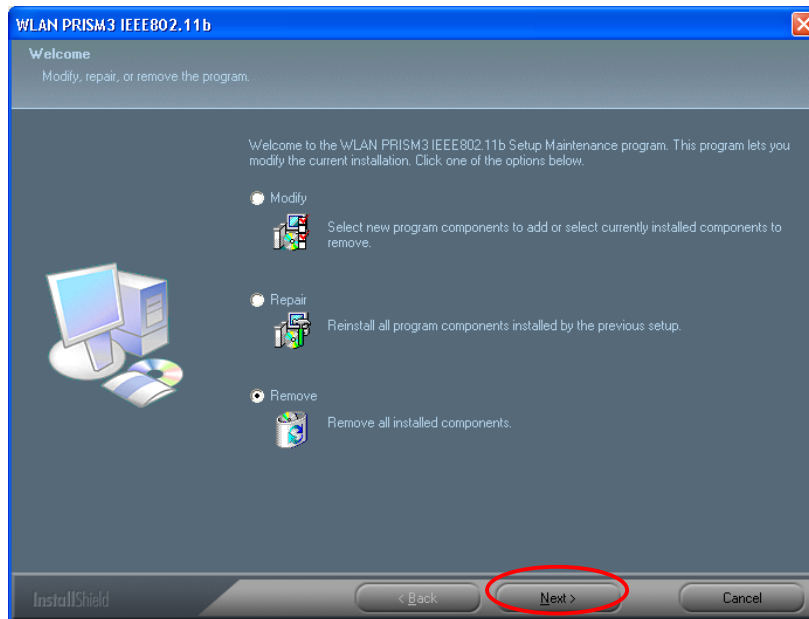


Figure 5-4: The **WLAN PRISM3 IEEE802.11b** Window

9. After choosing **Yes** when the following message box appears, the removal is entirely completed.

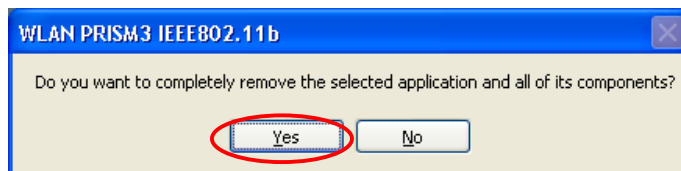


Figure 5-5: The **WLAN PRISM3 IEEE802.11b** Message Box

The 802.11b WLAN USB Module Does Not Work Properly

If this happens, follow the guidelines below.

1. Right-click the **My Computer** desktop icon and choose **Properties** to open the **System Properties** dialog box.
2. If you are under Windows 98SE or Me, choose the **Device Manager** tab, or if your system is Windows 2000 or XP, click the **Hardware** tab and then choose the **Device Manager** button.
3. In the opened window, find your USB module to see if the installation is successful. If you see a yellow exclamation mark beside the item, please go along with the steps below to reinstall the drivers.
4. Uninstall the software and hardware drivers from your PC. (Please refer to the previous topic for details)
5. Restart your computer and repeat the installation procedures as indicated in this chapter in this manual: **Installation of the 802.11b Wireless LAN USB Module**.

- When finished, open the **Device Manager** window again to verify if the installation is approved. The yellow exclamation mark shall be removed for this time.

Upgrade WLAN PRISM3 IEEE802.11b and the Module's Driver

To upgrade the drivers for **WLAN PRISM3 IEEE802.11b** and the 802.11b Wireless LAN USB Module, follow the procedures below. Please note that the details might be slightly different according to the Windows system you are using. Here we are taking the example of Windows XP.

- Click **Start** on the taskbar and choose **Control Panel** from the **Settings** menu.
- Select **System** to open the **System Properties** dialog box, and then under the **Hardware** tab, click the **Device Manager** button to open the **Device Manager** dialog box.
- Double-click the **Other devices** item in the list to show the **IEEE 802.11b PRISM3 USB** icon, which is displayed with a yellow icon beside. Right-click the icon and choose **Update Driver** from the opened menu.

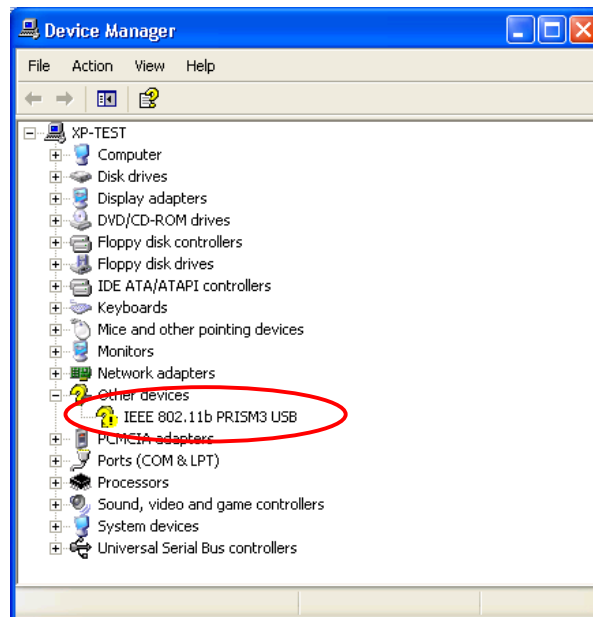


Figure 5-6: The **Device Manager** Dialog Box

- In the **Hardware Update Wizard** dialog box, choose **Install the software automatically [Recommended]** and then click **Next** to continue.

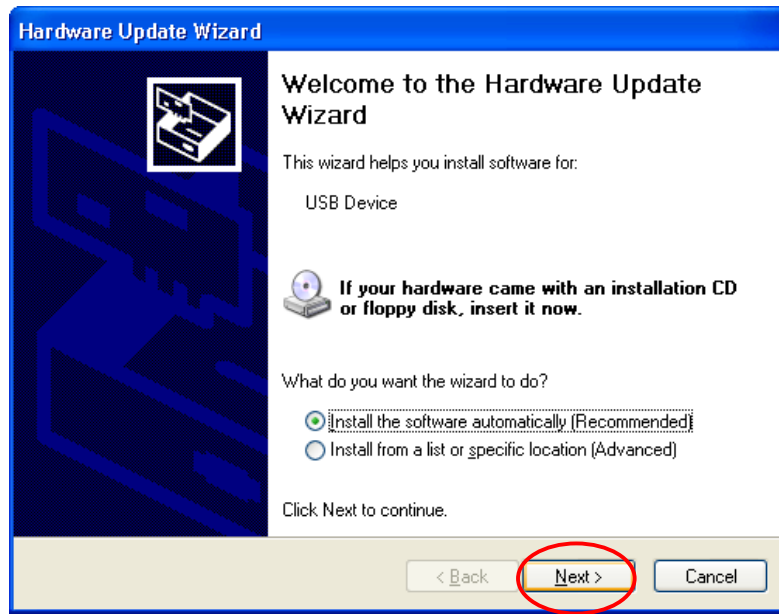


Figure 5-7: The **Upgrade Device Driver Wizard** Dialog Box

5. In a few seconds later, you will see the following dialog box appeared. Click **Finish** to end up the upgrade.

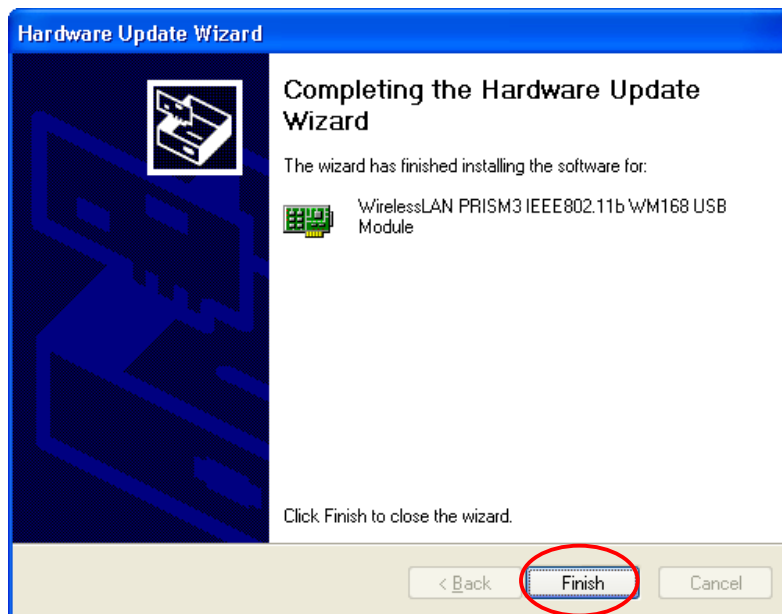


Figure 5-8: The **Complete** Screen

Reset the Country Selection

Since every country or region has a regulatory body that governs the use of radio channels, once you go abroad with your laptop, you may have to reset the country channel for the 802.11b WLAN USB Module to retain the Internet connection.

Thus please follow the procedures below to redefine the channel:

1. Click **Start** on the taskbar and choose **WirelessLAN USB Tools** from the **Programs** menu.
2. Select **Country Selector** to open the **Country Selector** dialog box.

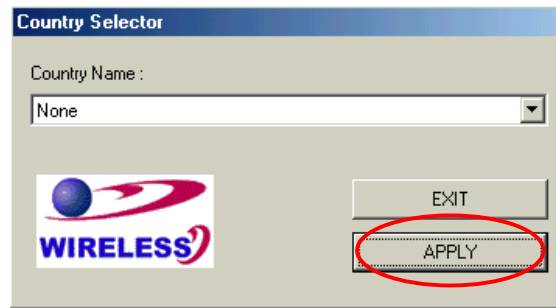


Figure 5-9: The **Country Selector** Dialog Box

3. Choose the country you currently stay in from the **Country Name** drop-down list.
4. Click the **APPLY** button to activate the new settings.
5. In the prompted message box, click **OK** to ensure the rearrangement. In a few seconds later, the resetting will have been done.

APPENDIX B: SPECIFICATIONS

Product Name	802.11b 11 Mbps WLAN USB Module
Model Name	WM168b
Host Interface	Std. USB 1. 1 I/F
Dimensions	25 (W) x 60 (L) x 4.3 (H) mm
Weight	7.5g
Frequency Band	2.400 ~ 2.4835GHz (subject to local regulations)
Number of Channel	11 channels (US, Canada); 13 channels (ETSI); 14 channels (Japan)
Operating Voltage	3.3V \pm 5%
Current Consumption	Tx: 300mA / Rx: 285mA / Standby: 38mA / Sleep: < 1mA
Spreading	DSSS (Direct Sequence Spread Spectrum)
Data Rate	11Mbps, 5.5Mbps, 2Mbps, 1Mbps
Transmit Power	Typ. 15 dBm @ Nominal Temperature Range
Receive Sensitivity	11 Mbps @ -82 dBm, Typical
Modulation	11Mbps and 5.5Mbps CCK; 2Mbps: DQPSK; 1Mbps: DBPSK;
Security	64/128 bit WEP Encryption
Antenna	Two GSC Type RF Connector
LED Indicator	Defined By I/F Pin No. 5
Supplied Driver	Windows 98SE/2K/Me/XP
Standards	IEEE 802.11b Wi-Fi compliant
Media Access Protocol	CSMA/CA with ACK
Warranty	1 year
Temperature Range	0 ~ 65°C (Operating), -20~70°C (Storage)
Humidity	Max. 95% Non-condensing
Operating Range	Open Space: 100 – 300m; Indoor: 40m – 100m The transmission speed varies in the surrounding environment.
Roaming	Full mobility and seamless roaming from cell to cell and across access points
Network Protocol	TCP/IP, IPX, NetBEUI
Management Utility	Link Configuration for network join and diagnostics
Software Certification	WHQL
EMC certification	FCC, CE
Packaging	Customer Define
CIS	Customer Define

APPENDIX C: GLOSSARY

802.11b – 802.11b is one of the IEEE standards for wireless LANs and specifies a data transfer rate of 5.5 and up to 11 megabit per second in the 2.4 gigahertz radio band. 802.11b is recently given other widespread names as Wi-Fi or Wireless Fidelity.

Ad-hoc Network – Ad-hoc network, also known as peer-to-peer network, means a wireless network which is composed only of stations. This type of network is created with a group of wireless-equipped computers. With the wireless devices, each computer, functioning as a server and a client at the same time, can establish a LAN to directly communicate with other computers without any access points involved. It is easy to set up a peer-to-peer network; however, because all stations must be within a specific distance in order to be capable of communicating with each other, it is also limited. Thus, such a type of network is widely used at small networking requirements, like between a few computers or devices at departmental scales.

IEEE – IEEE, the Institute of Electrical and Electronics Engineers, is the world's largest technical professional society and is consisted of more than 366,000 members in approximately 150 countries. As a leading authority on areas ranging from for computer engineering, biomedical technology and telecommunications, IEEE endeavours to set more than 800 active consensus standards till now and publish 30 percent of the world's literature in electrical engineering, computers and control technology.

Infrastructure Network – Infrastructure network allows you to communicate with wired LAN via an access point. Unlike Ad-hoc network that all wireless-equipped stations within the range may directly communicate with each other, clients of Infrastructure network can only transmit and receive data through the use of a central access point. The associated access point also provides communication with the wired network.

MAC Address – The MAC (Media Access Control) address is the serial number of your Network Interface card. It has been burnt into the chip and could not be changed. MAC address is thus unique. While a computer on the network is transferring data, its MAC address is also conveyed and attached to be part of the header of the data packets.

Roaming – Roaming is an ability to allow users from one cell (or BSS) to another without losing connection via a wireless device.

SSID – SSID, Service Set Identifier, is a 32-character unique identifier for a workgroup of the wireless network. An SSID of one WLAN should be different from that of others, so all access points and other

devices intending to communicate with a specific WLAN cannot achieve successful network connectivity unless presenting the identical SSID. From some perspective, an SSID performs as a kind of password to supply a measure of security on the WLAN. However, if an access point is configured to “broadcast” its SSID, this essential security is no longer remained. An SSID is also known as a Network Name.

WEP – Wired Equivalent Privacy (WEP) is a security mechanism for wireless local area networks. It is designed for 802.11 standard to offer an equal level of security as that of a wired LAN. Through the configurations of encryption, WEP aims to provide security while the nodes with wireless devices are transferring or receiving data packets over radio waves.

WLAN – Wireless local area network (WLAN) receive and transmit data over the air by using radio frequency (RF) technology. The vital significance of WLAN is it minimizes the requirements for wired connections and provides not only data connectivity but also user mobility. Without the constraint of physical location, wireless LAN allows clients to transmit and receive data via high-frequency radio waves rather than wires.

USB – USB, standing for Universal Serial Bus, was designed to make a connection between the computer and its peripherals, such as keyboards, scanners, webcams, printers, etc., via an easy operation of plug-and-play. USB has proved to be a good solution that allows users to quickly and easily connect and add peripherals to computers. Through the USB interface, there’s even no need to turn the computer off while adding new peripherals mentioned above to a desktop or laptop computer. Due to its convenience and simplicity, USB has won worldwide popularity, and most peripherals for computers these days are designed for the USB standard.